

# **FALCO AL 508-AL510**

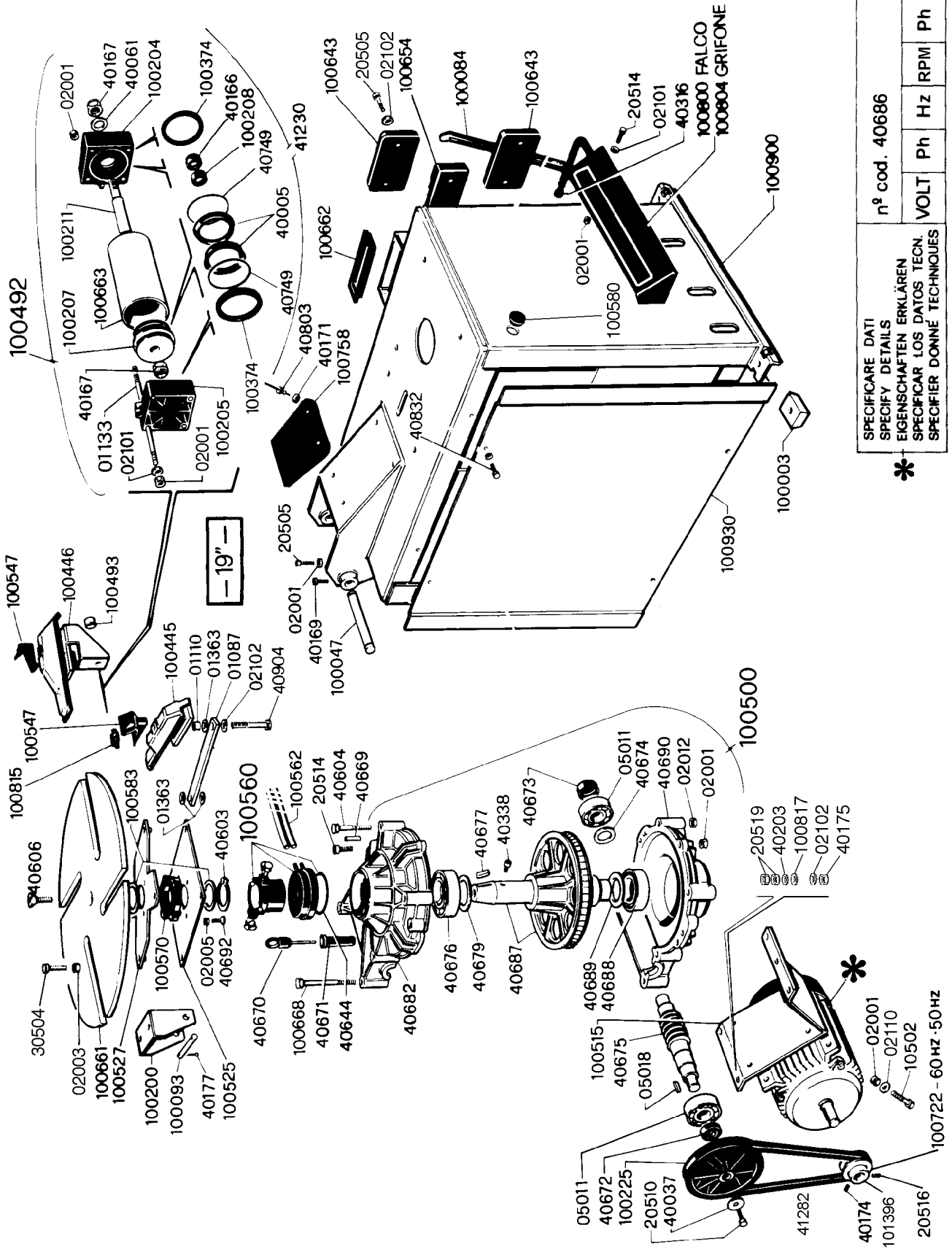
**PARTI DI RICAMBIO  
PIÈCES DE RECHANGE  
SPARE PARTS  
ERSATZTEILEN  
REPUESTOS**

N° 101508 REV. 2  
N° 101509 REV. 2  
N° 101513 REV. 1  
N° 101510 REV. 2  
N° 101787 REV. 1 (NO CE)

N° 101512 REV. 3  
N° 101066 REV. 1  
N° 101067 REV. 2  
N° 101072 REV. 2  
N° 101518 REV. 1

N° 101514 REV. 2  
N° 101071 REV. 1  
N° 101515 REV. 2  
N° 101045 REV.0  
N° 101785 REV.0 (NO CE)

N° 100080 REV. 0  
N° 100078 REV. 0  
N° 100142 REV. 0  
N° 100183 REV. 0



SPECIFICARE DATI SPECIFY DETAILS EIGENSCHAFTEN ERKLÄREN SPECIFICAR LOS DATOS TECN. SPECIFIER DONNE TECHNIQUES	n° cod. 40686			
	VOLT	Ph	Hz	RPM
	Ph	Hz	RPM	Ph

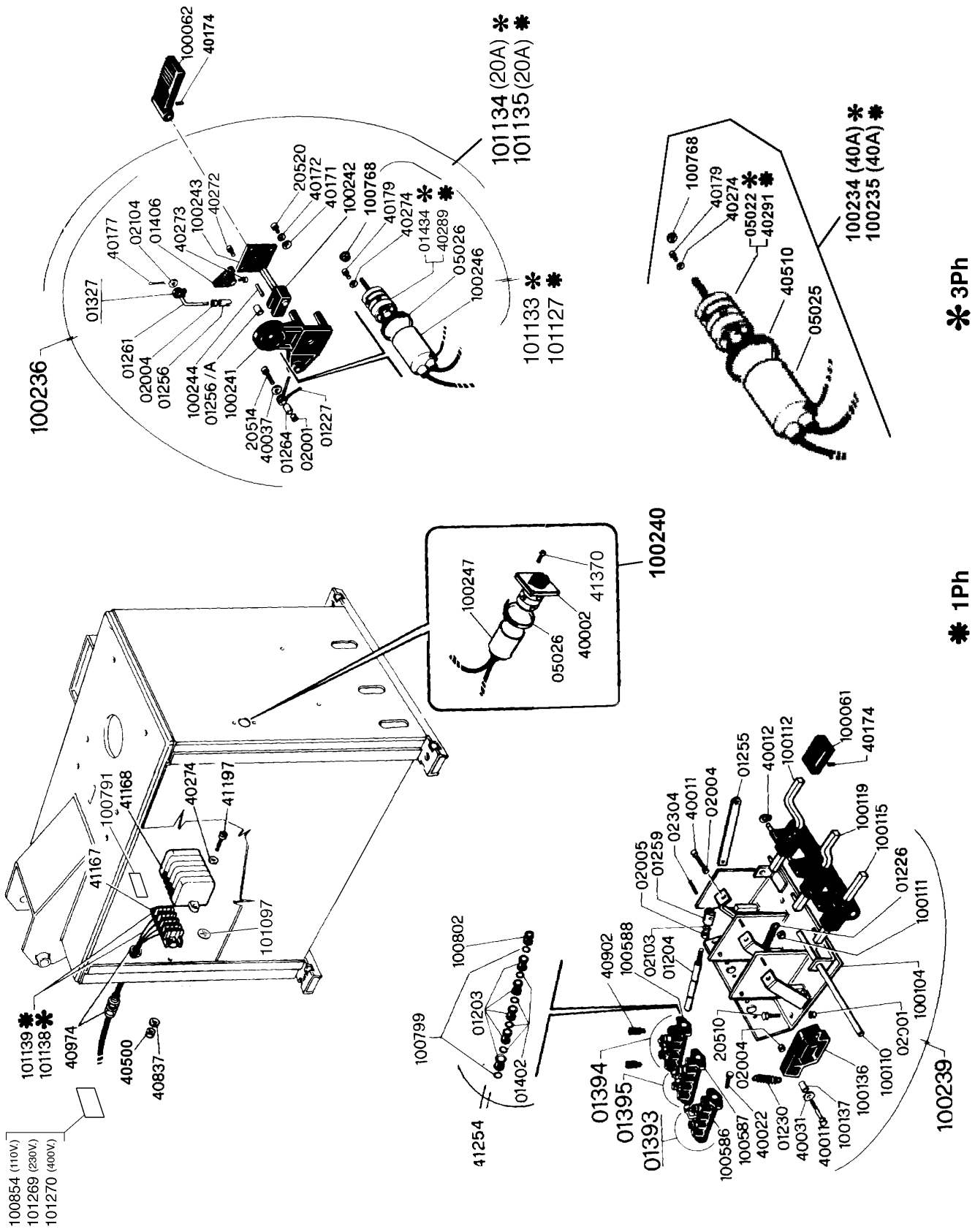
\* (Asterisk symbol indicating specific technical specifications)

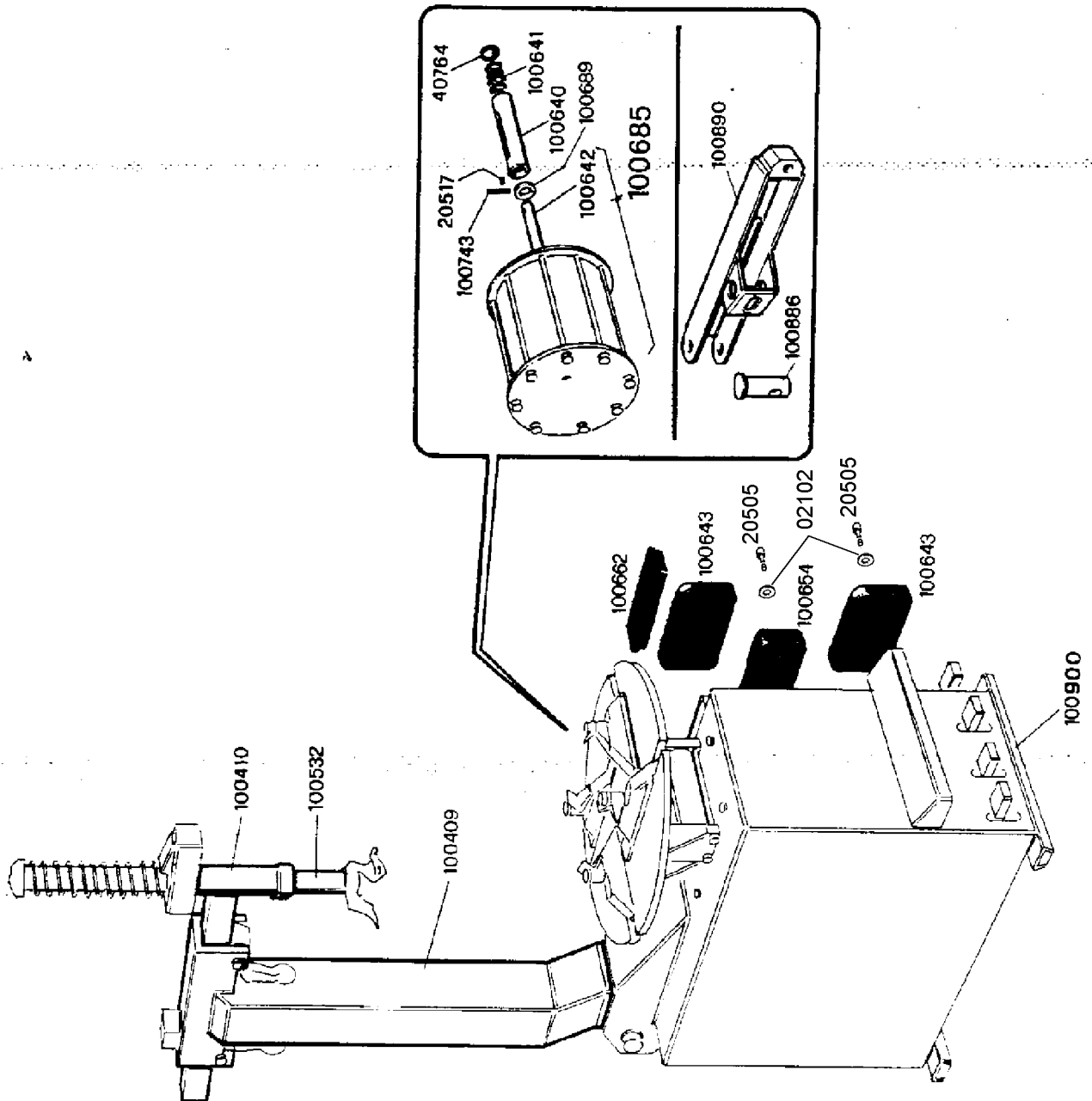
100722 - 60 HZ - 50 HZ

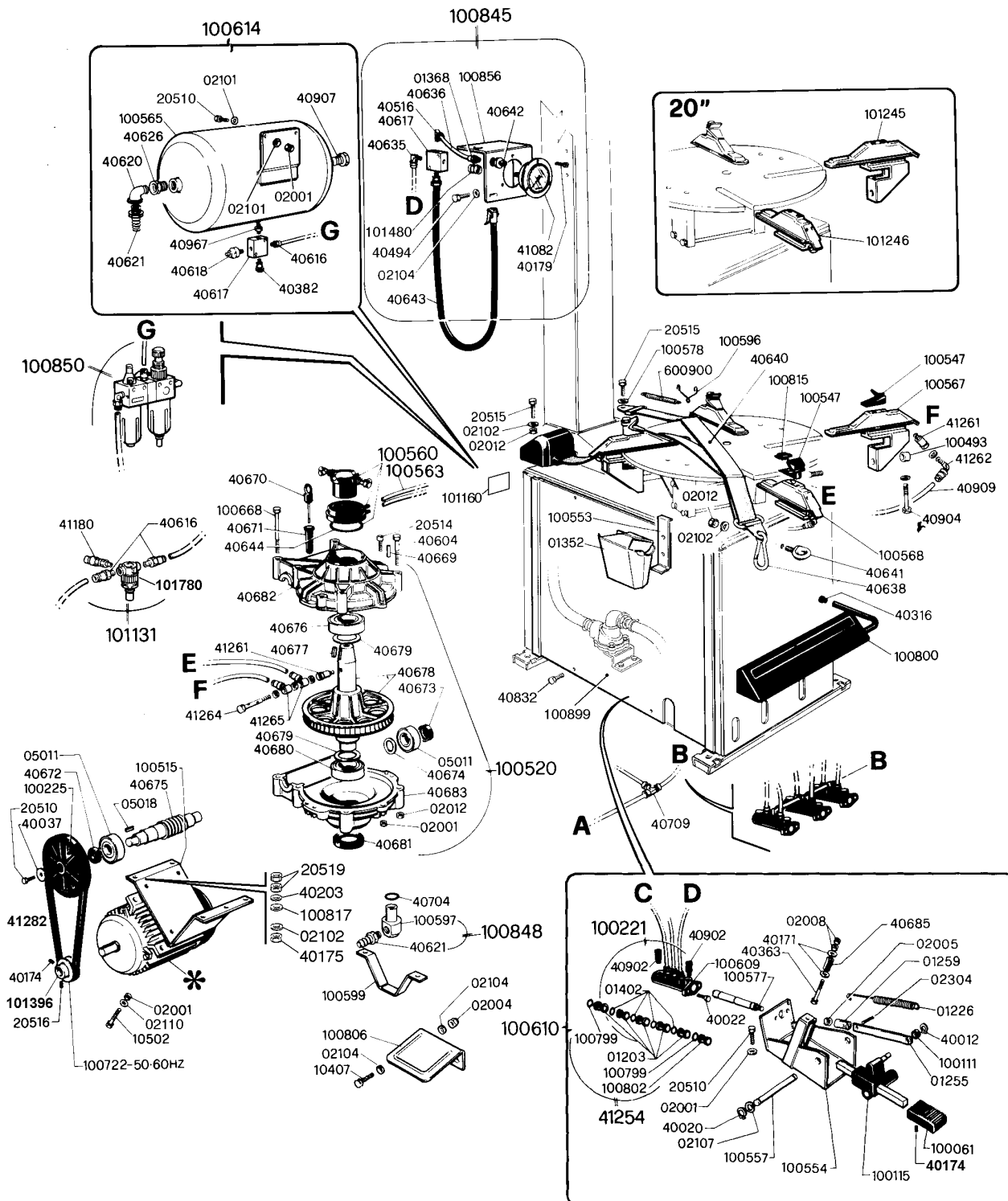




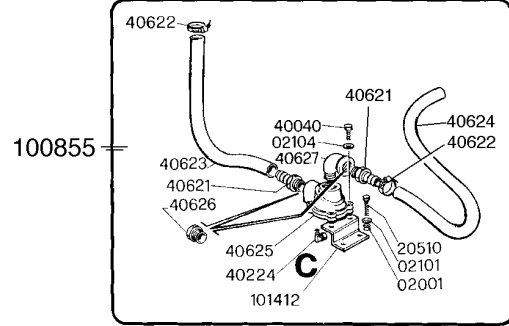




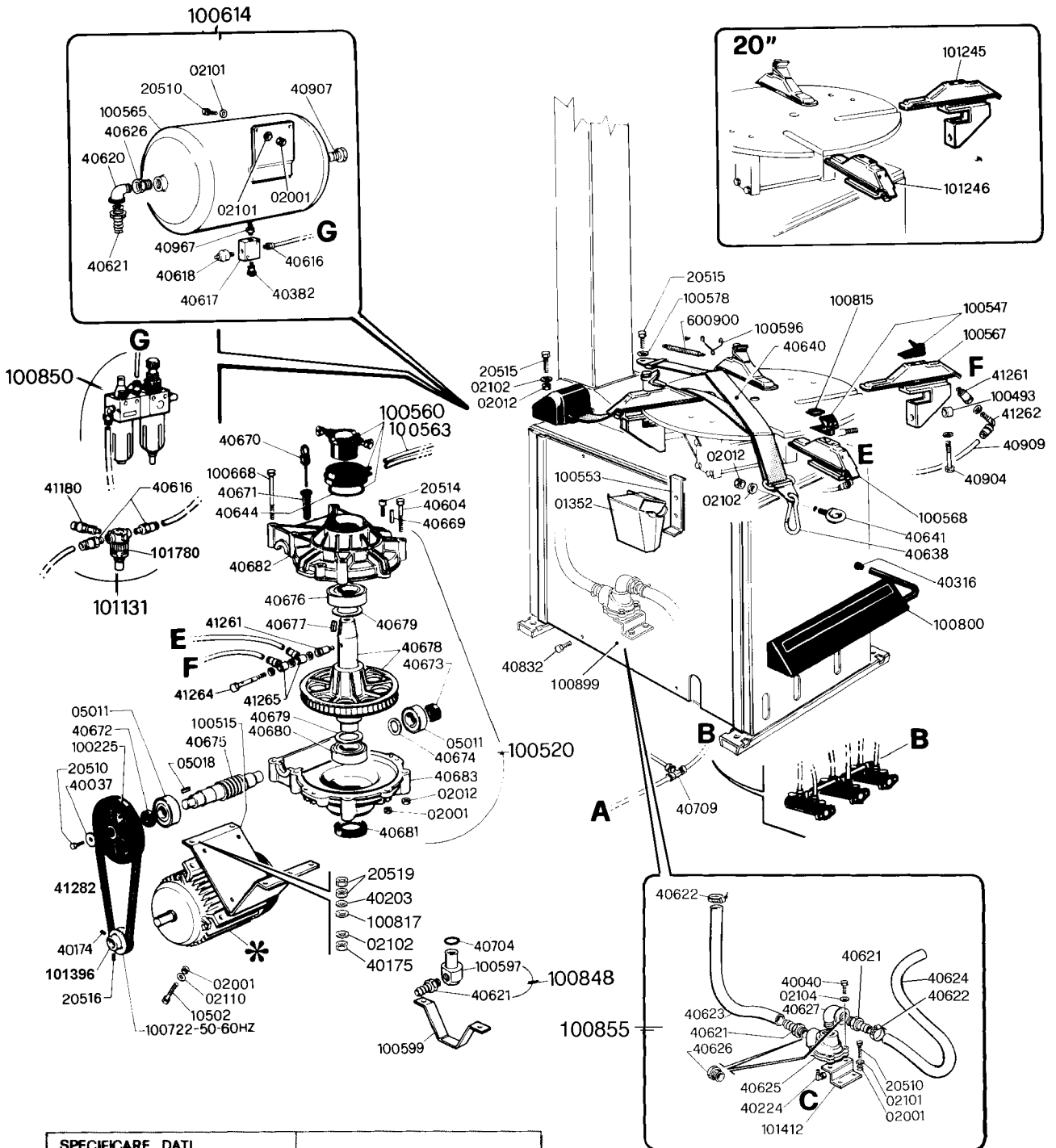




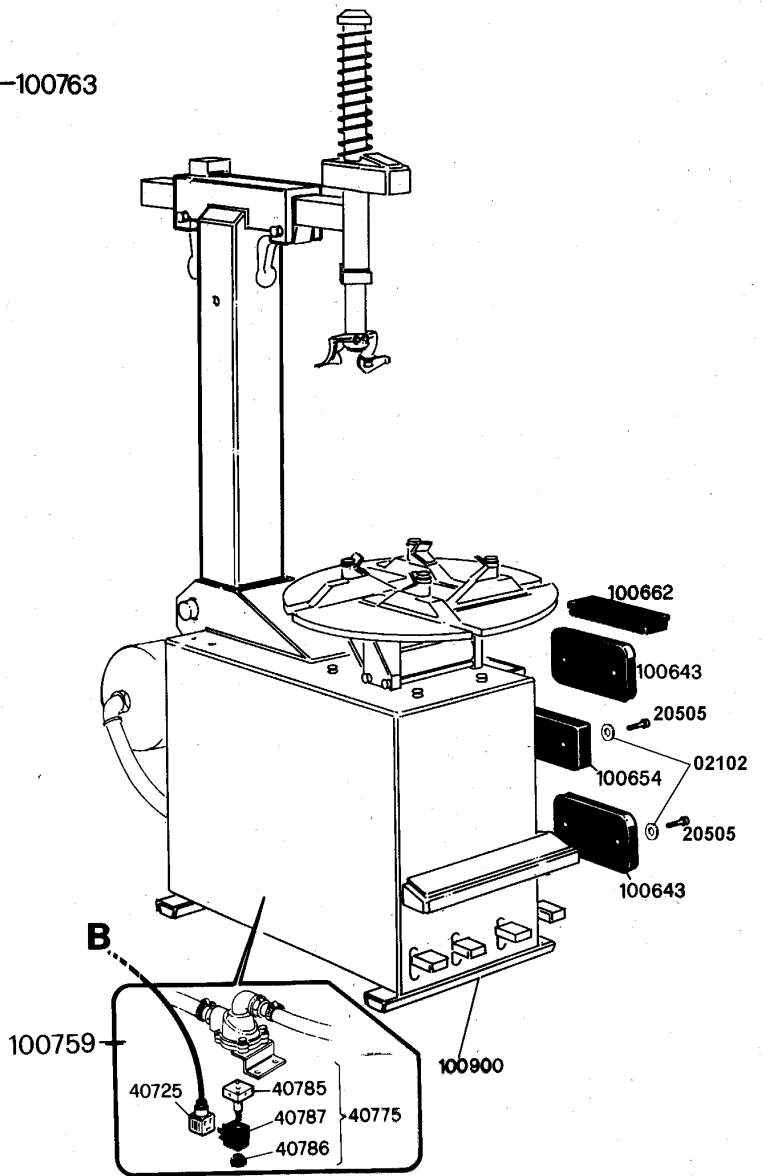
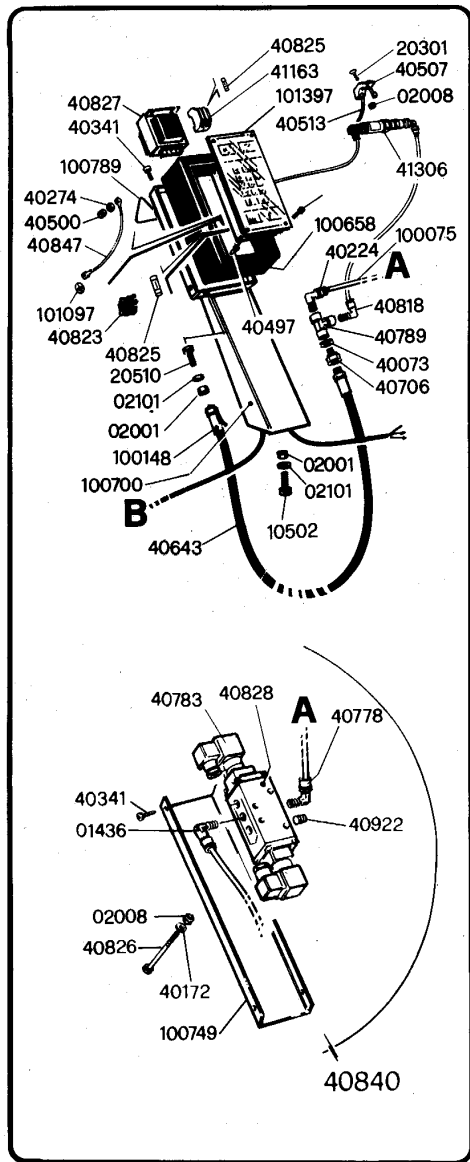
*	SPECIFICARE DATI SPECIFY DETAILS EIGENSCHAFTEN ERKLÄREN SPECIFICAR LOS DATOS TECN. SPECIFIER DONNÉ TECHNIQUES	n° cod. 40686				
		VOLT	Ph	Hz	RPM	Ph

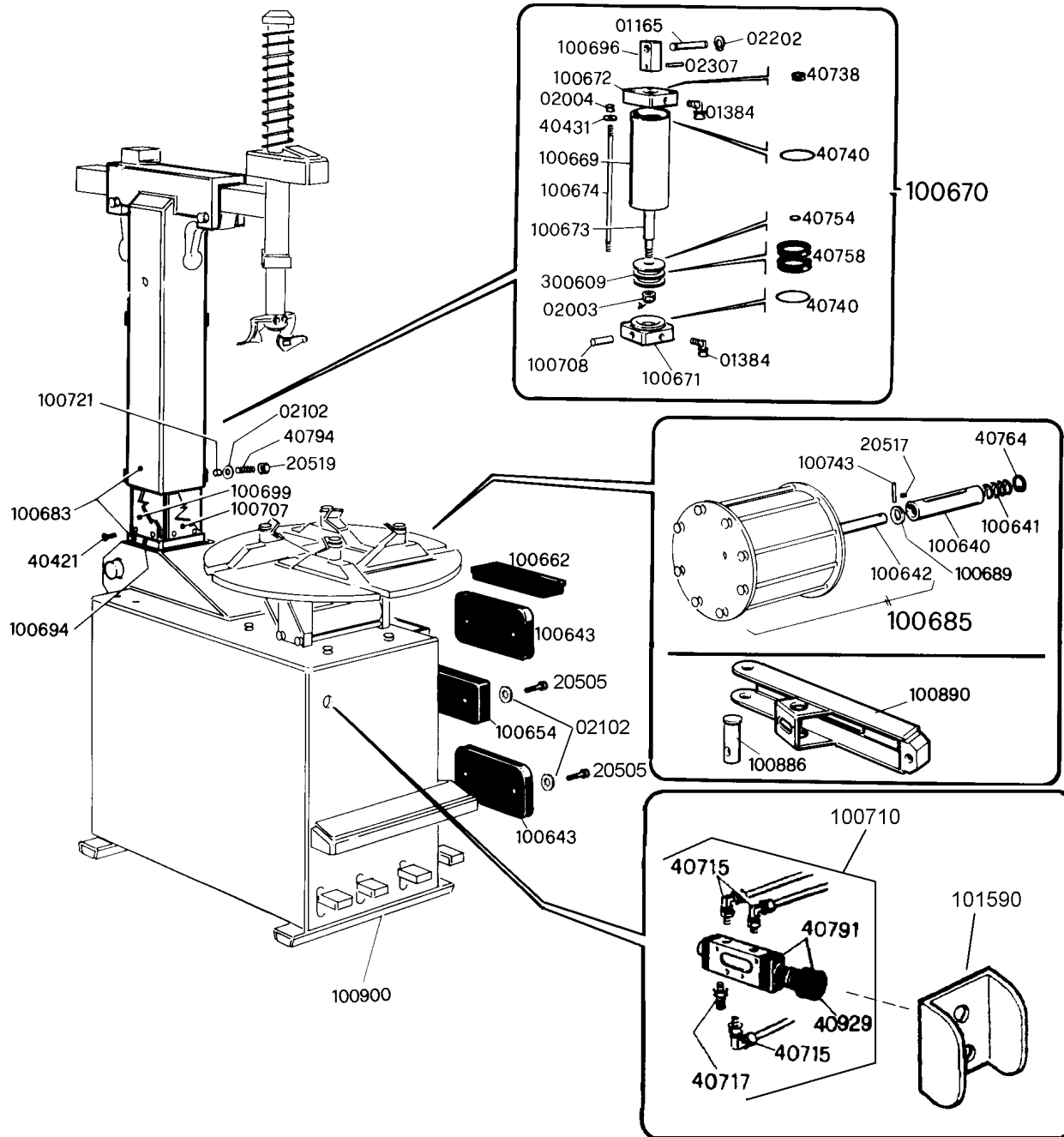


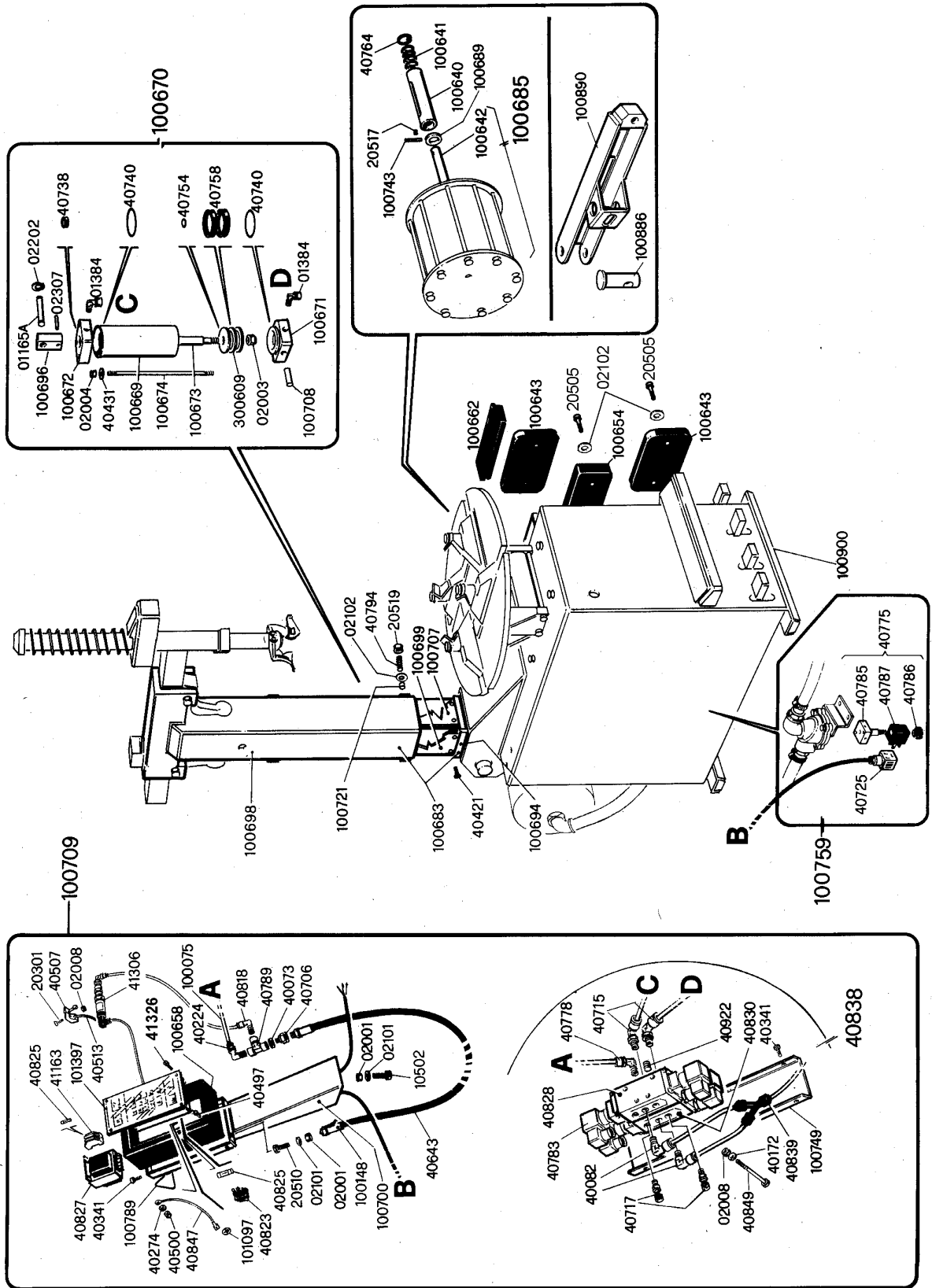




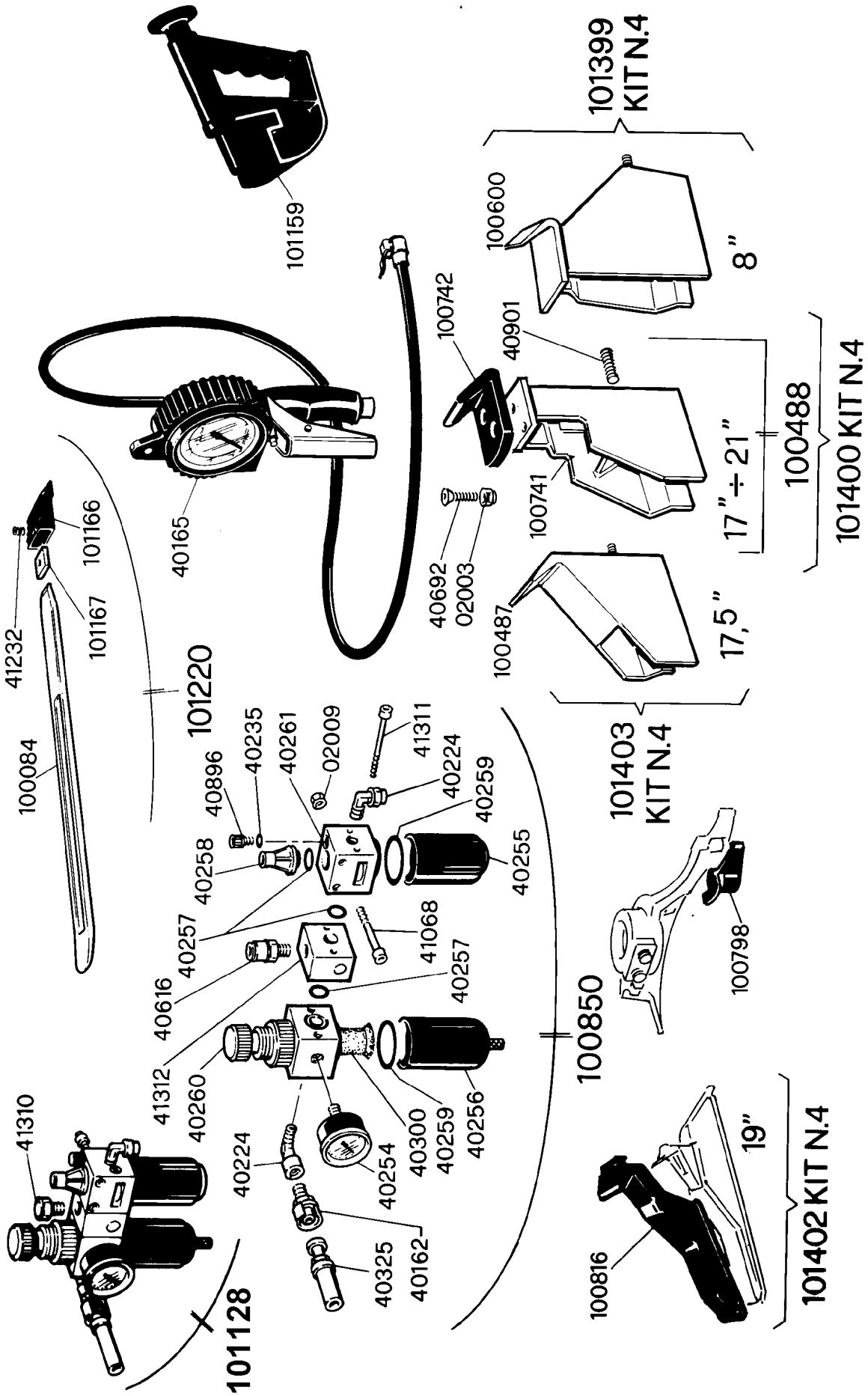
* SPECIFICARE DATI SPECIFY DETAILS EIGENSCHAFTEN ERKLÄREN SPECIFICAR LOS DATOS TECN. SPECIFIER DONNÉ TECHNIQUES	n° cod. 40686				
	VOLT	Ph	Hz	RPM	Ph

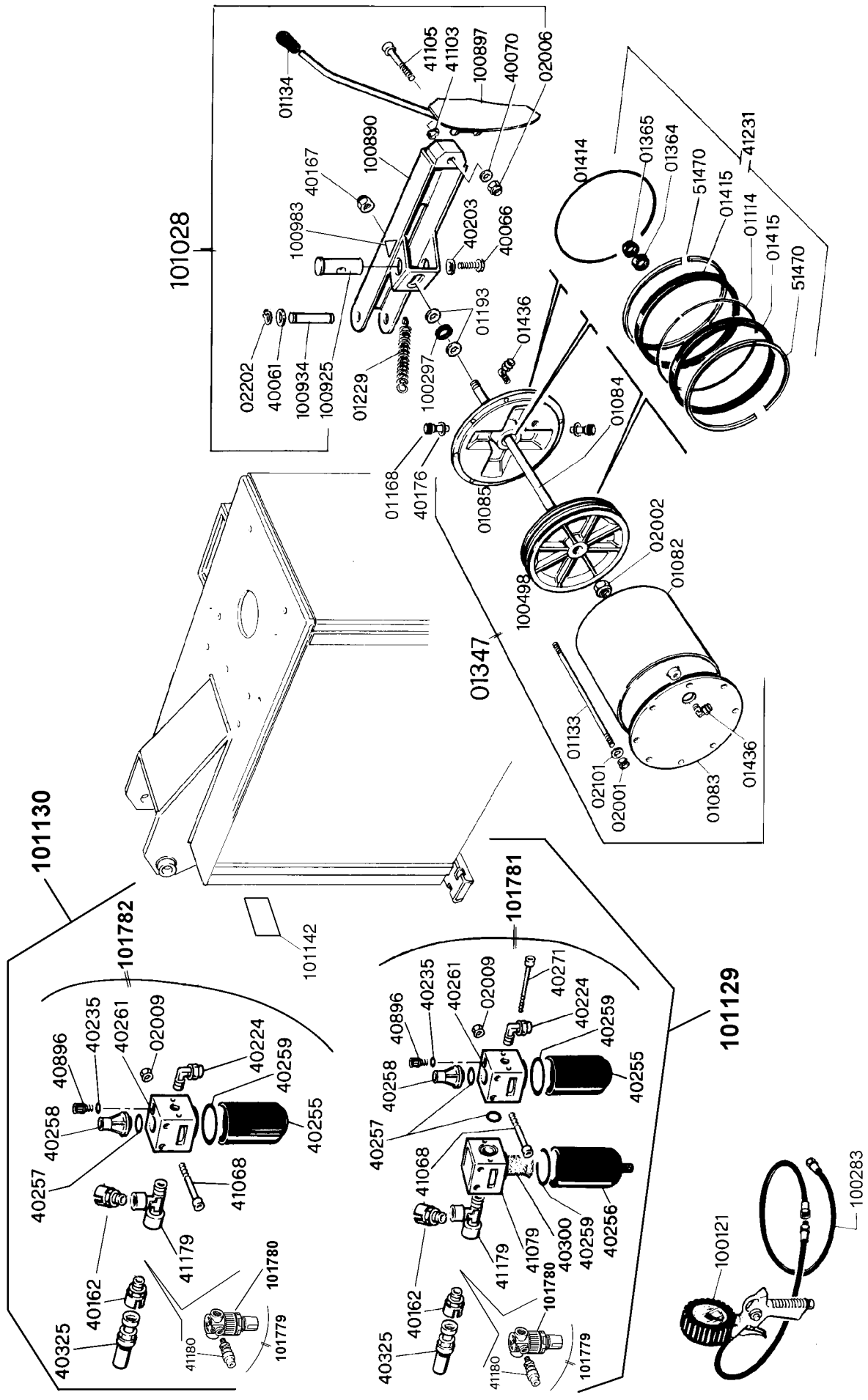


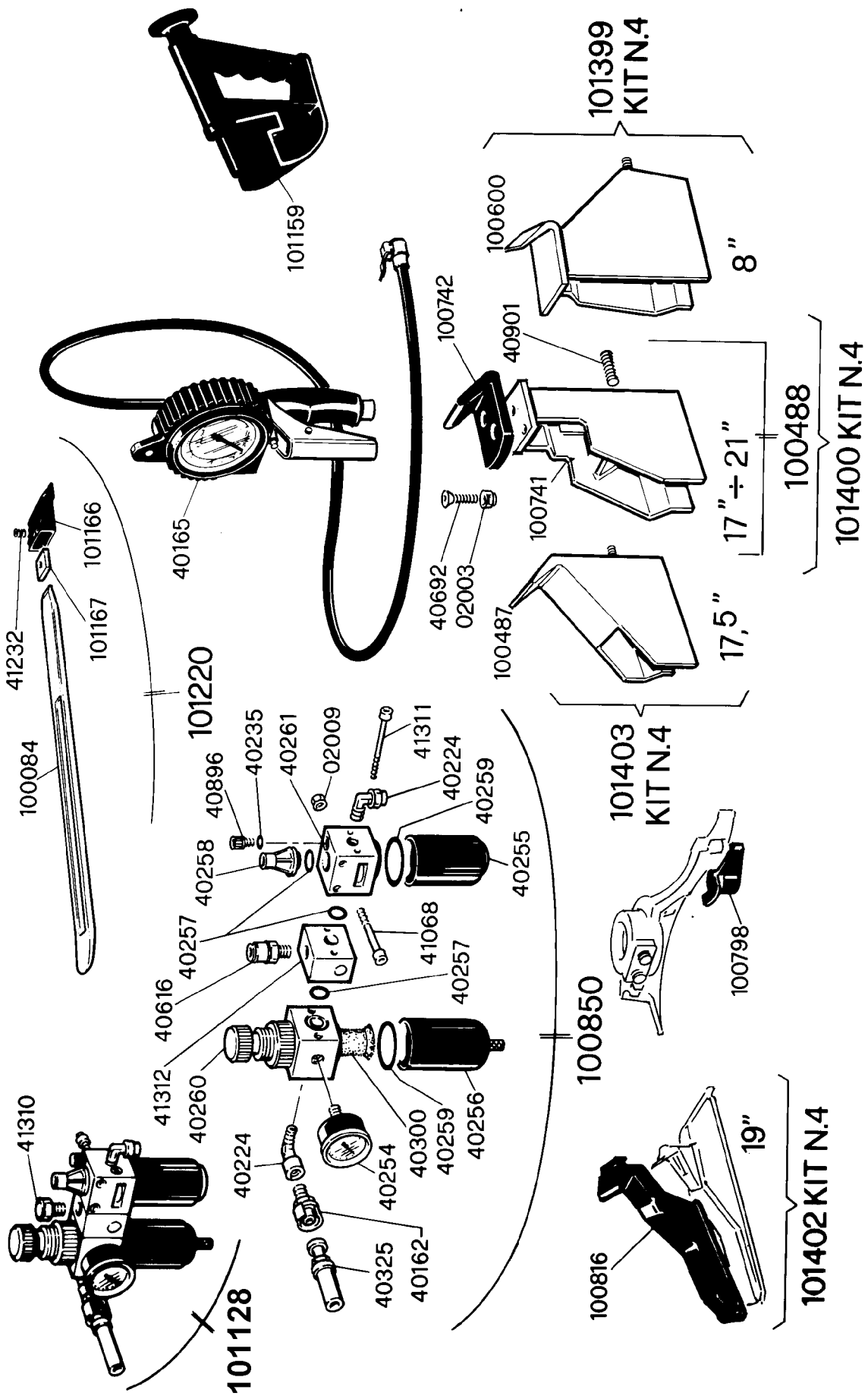




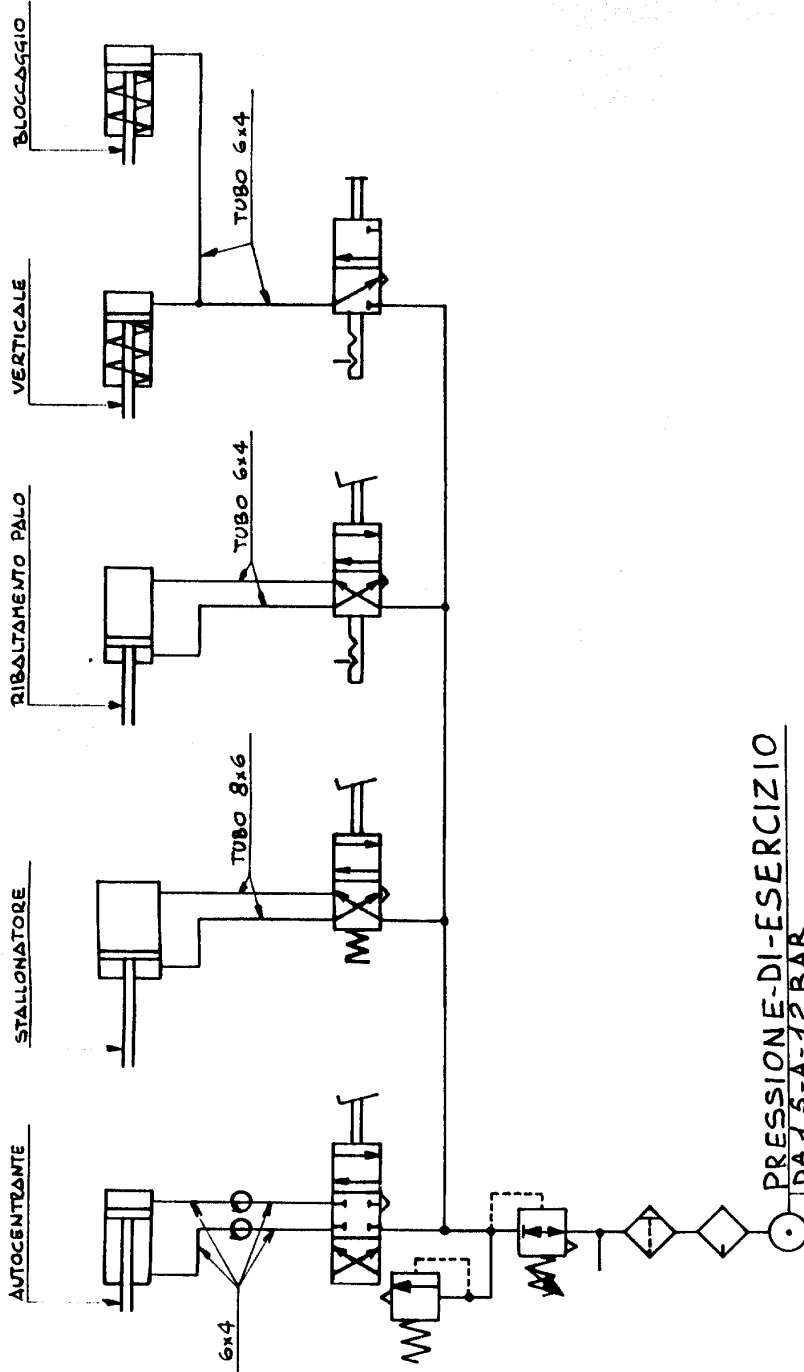












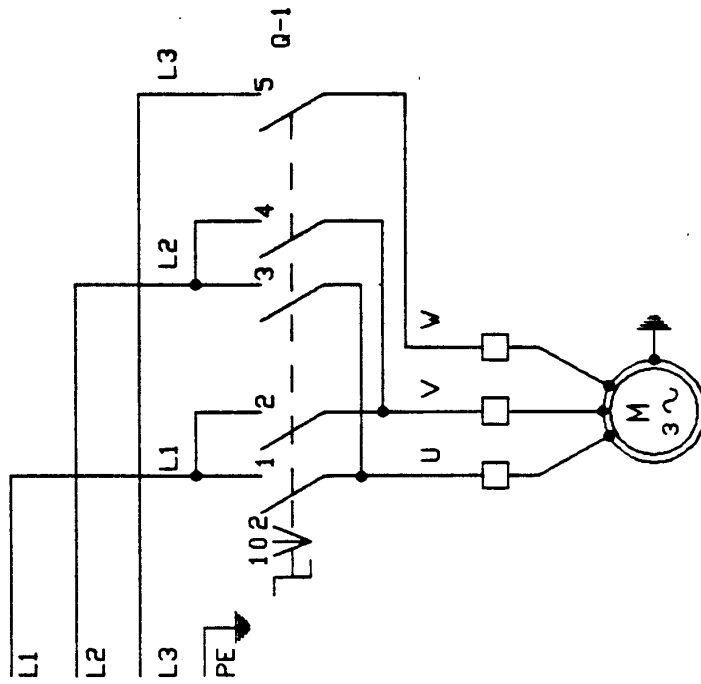
MONTAGGIO-GRUPPO  
A-RICHIESTA-FR+L+  
V&V-TAR 3,5-BAR

P-DA 4,5-A-12  
BAR

MONTAGGIO GRUPPO A RICHIESTA

10-1-91  
Modificato - 11-8-1990 - L. 1000  
con Valvola di Sicurezza  
DESCRIZIONE

MODIFICA		R. 1000	
Pos. Clienti	Stato	Prof. cont.	Tip.
Disseminazione	Dim. prezzo	Eq. av.	Eq. ser. v.
Gruppo	Schema IMPIANTO PNEUMATICO	Dis. 415/10/1	Cent. 4
MECCANICA		Approvato - 0-3-91	Dis. N° 10080
		Approvato - 5-5-89	
A TERMINI DI LEGGE È VIETATA LA RIPRODUZIONE O LA COMUNICAZIONE AD ALTRI SENZA UNA MOSTRA E AUTORIZZAZIONE SCRITTA			



MOTORE RIDUTTORE

Q-1

	X	X		X		2	
						0	S
X			X	X		1	R
1	2	3	4	5	6	CONT.	
I	II			III		ELEM.	

1-ROTAZIONE ORARIA

2-ROTAZIONE ANTIORARIA

DISEGNO : 93680U

DATA DIS

23/12/93 PEL

Dis.N°

3 Ph - 1 speed

100078

Q-1

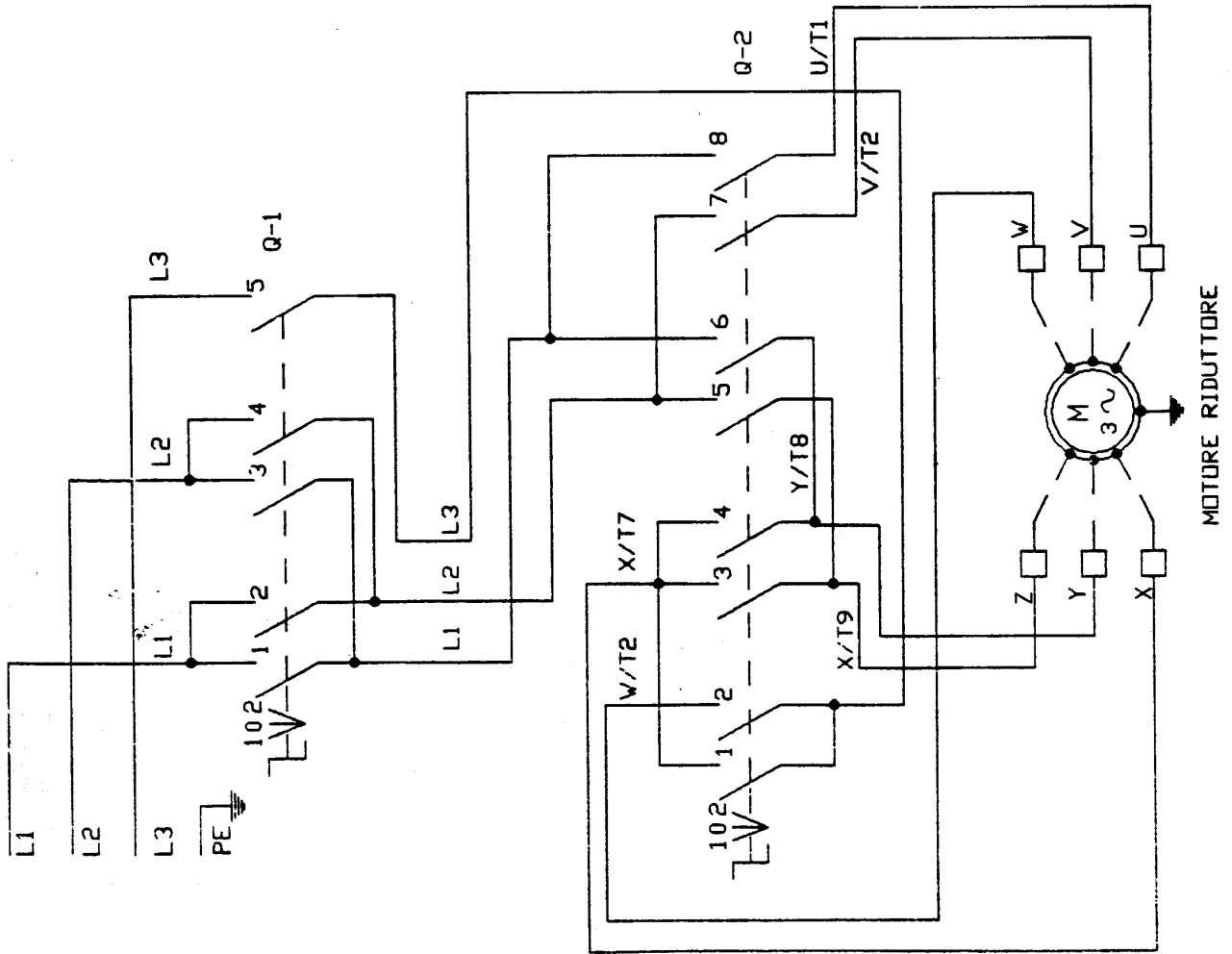
	X	X			2				S
						0			0
X			X	X		1			1
1	2	3	4	5	6	CONT.			
I		II		III		ELEM.			

1-ROTAZIONE ORARIA  
2-ROTAZIONE ANTIORARIA

Q-2

	X	X	X			X	X	2	
								0	
X				X	X			1	
1	2	3	4	5	6	7	8	CONT.	
I		II		III		IV		ELEM.	

1-VELOCITA' MINIMA  
2-VELOCITA' MASSIMA



DISEGNO : 936800

DATA DIS

23/12/93 PEL

Dis. N°

3 Ph - 2 speed

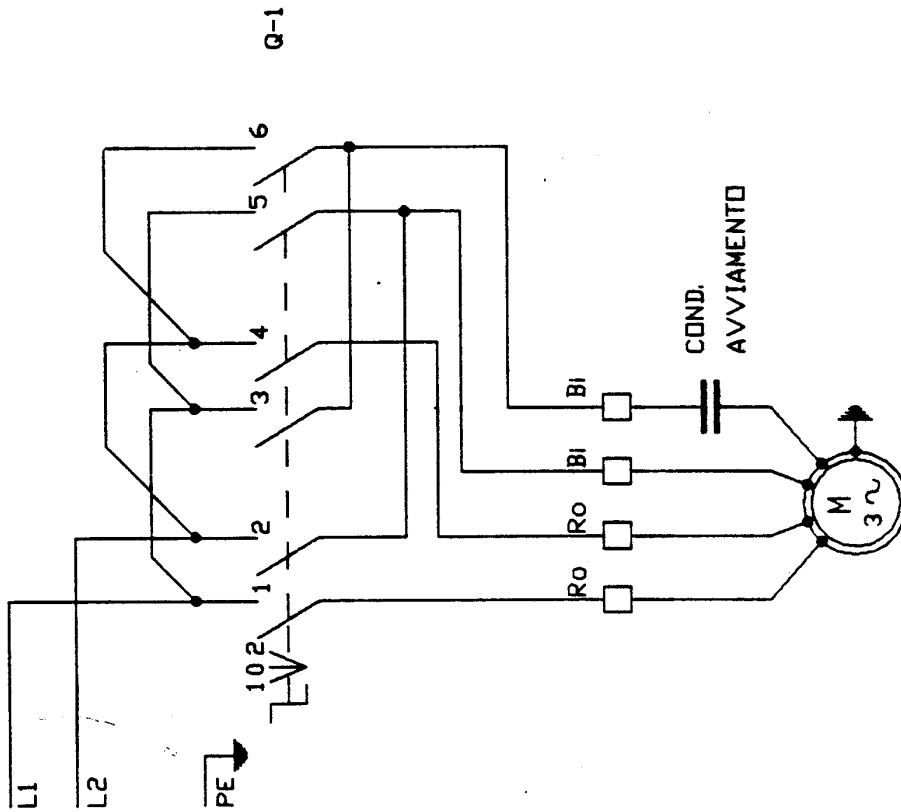
100142

Q-1

X		X	X	X	2	
X	X	X			0	S
1	2	3	4	5	6	CONT.
I	II	III	ELEM.			

1-ROTAZIONE ORARIA

2-ROTAZIONE ANTIORARIA



MOTORE RIDUTTORE

DISEGNO : 936900

DATA DIS

23/12/93 PEL

Dis. N°

1 Ph - 1 speed

100183