

FALCO AL 508-AL510

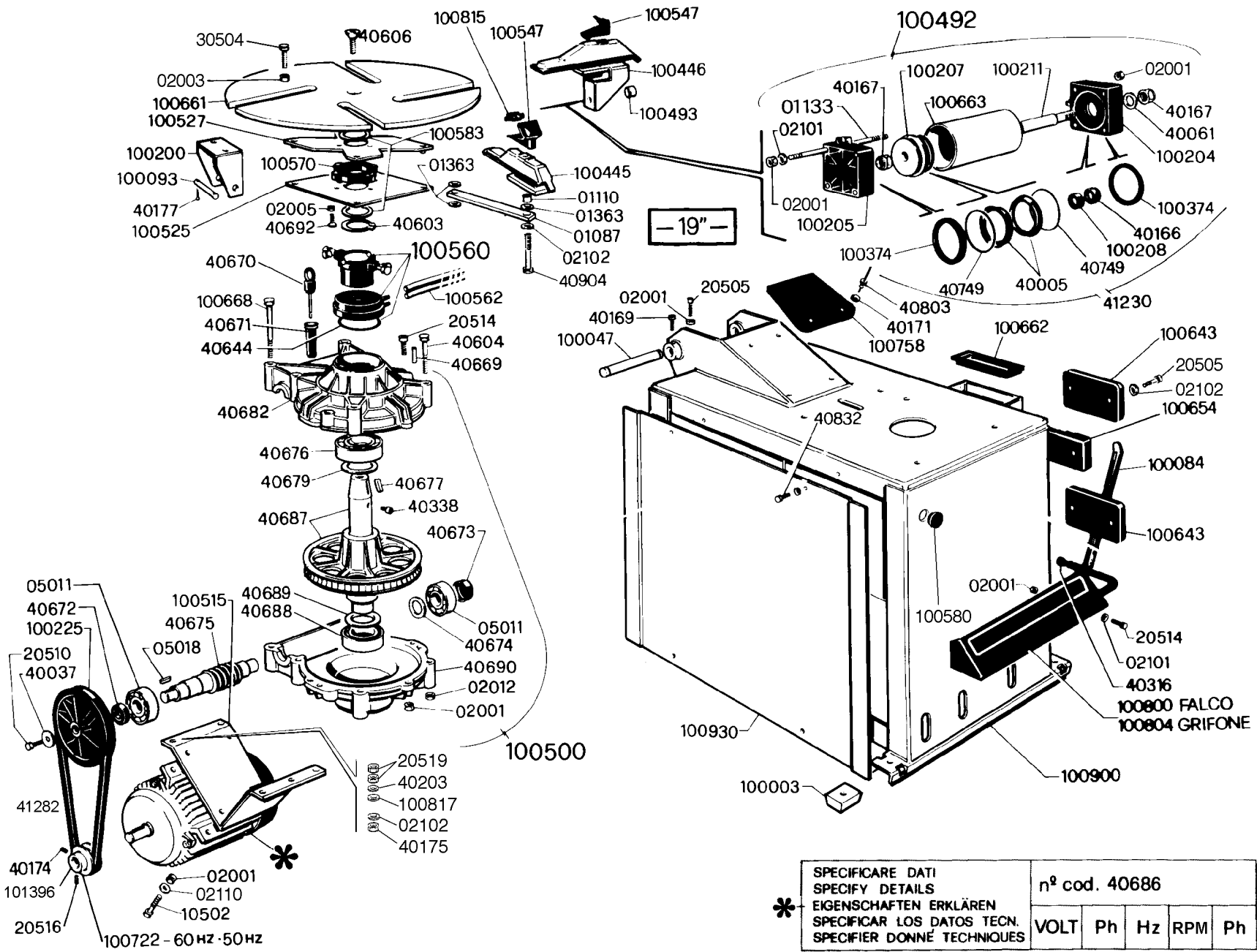
**PARTI DI RICAMBIO
PIÈCES DE RECHANGE
SPARE PARTS
ERSATZTEILEN
REPUESTOS**

N° 101508 REV. 2
N° 101509 REV. 2
N° 101513 REV. 1
N° 101510 REV. 2
N° 101787 REV. 1 (NO CE)

N° 101512 REV. 3
N° 101066 REV. 1
N° 101067 REV. 2
N° 101072 REV. 2
N° 101518 REV. 1

N° 101514 REV. 2
N° 101071 REV. 1
N° 101515 REV. 2
N° 101045 REV.0
N° 101785 REV.0 (NO CE)

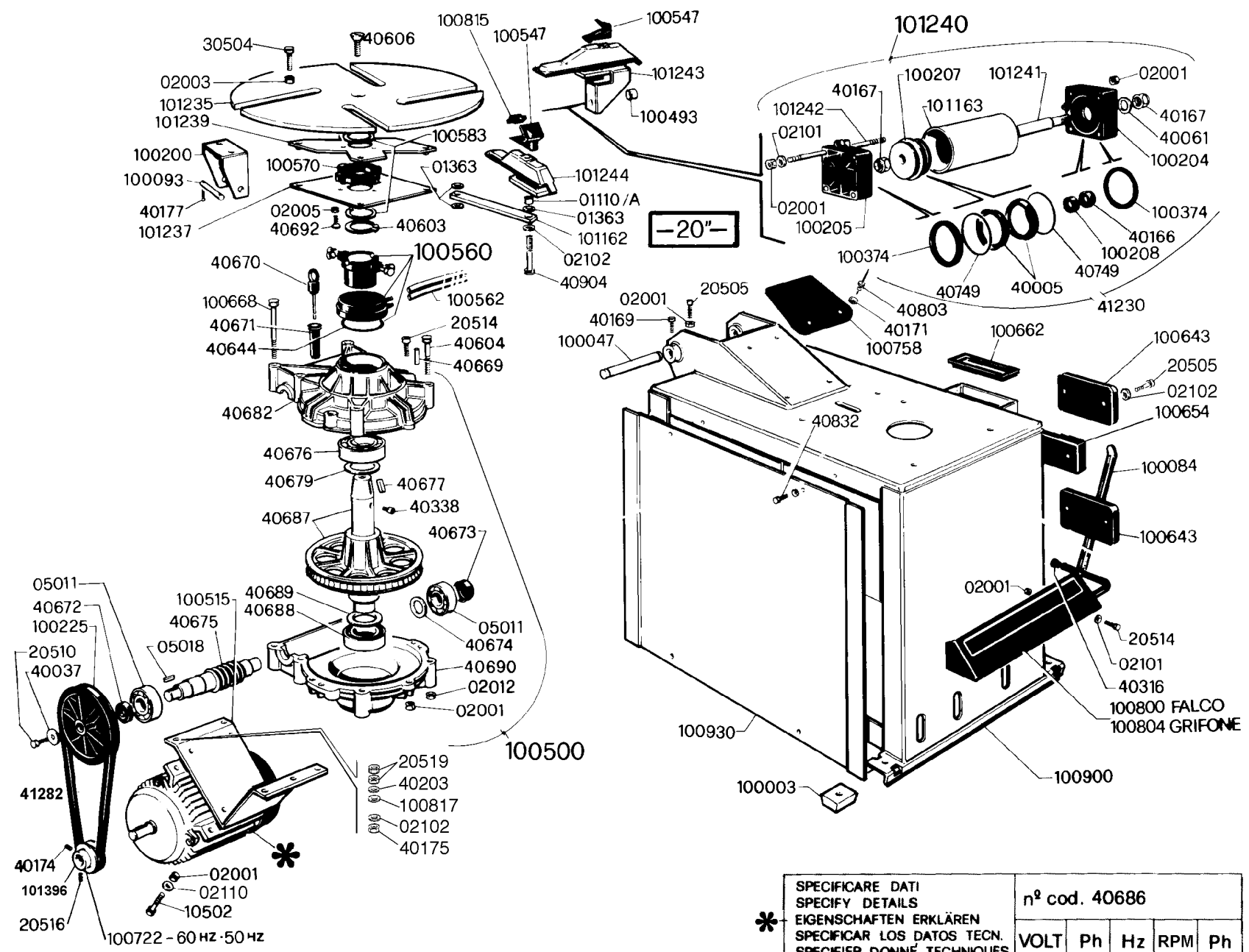
N° 100080 REV. 0
N° 100078 REV. 0
N° 100142 REV. 0
N° 100183 REV. 0



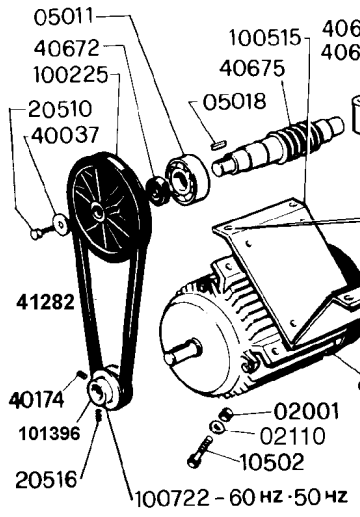
SPECIFICARE DATI SPECIFY DETAILS EIGENSCHAFTEN ERKLÄREN SPECIFICAR LOS DATOS TECN. SPECIFIER DONNÉ TECHNIQUES		n° cod. 40686				
*		VOLT	Ph	Hz	RPM	Ph

100722 - 60 HZ · 50 HZ

*



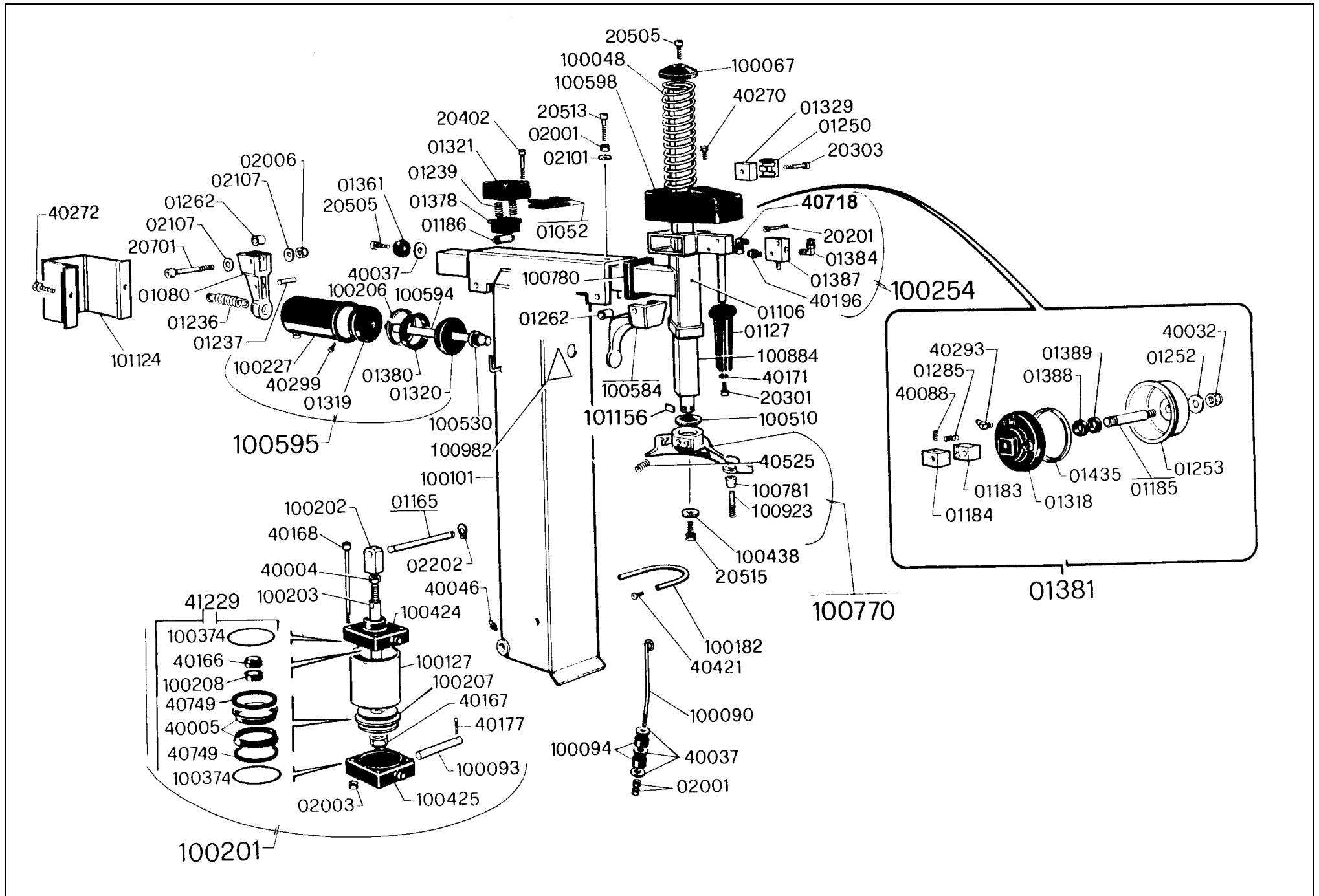
* SPECIFICARE DATI SPECIFY DETAILS EIGENSCHAFTEN ERKLÄREN SPECIFICAR LOS DATOS TECN. SPECIFIER DONNÉ TECHNIQUES	n° cod. 40686				
	VOLT	Ph	Hz	RPM	Ph

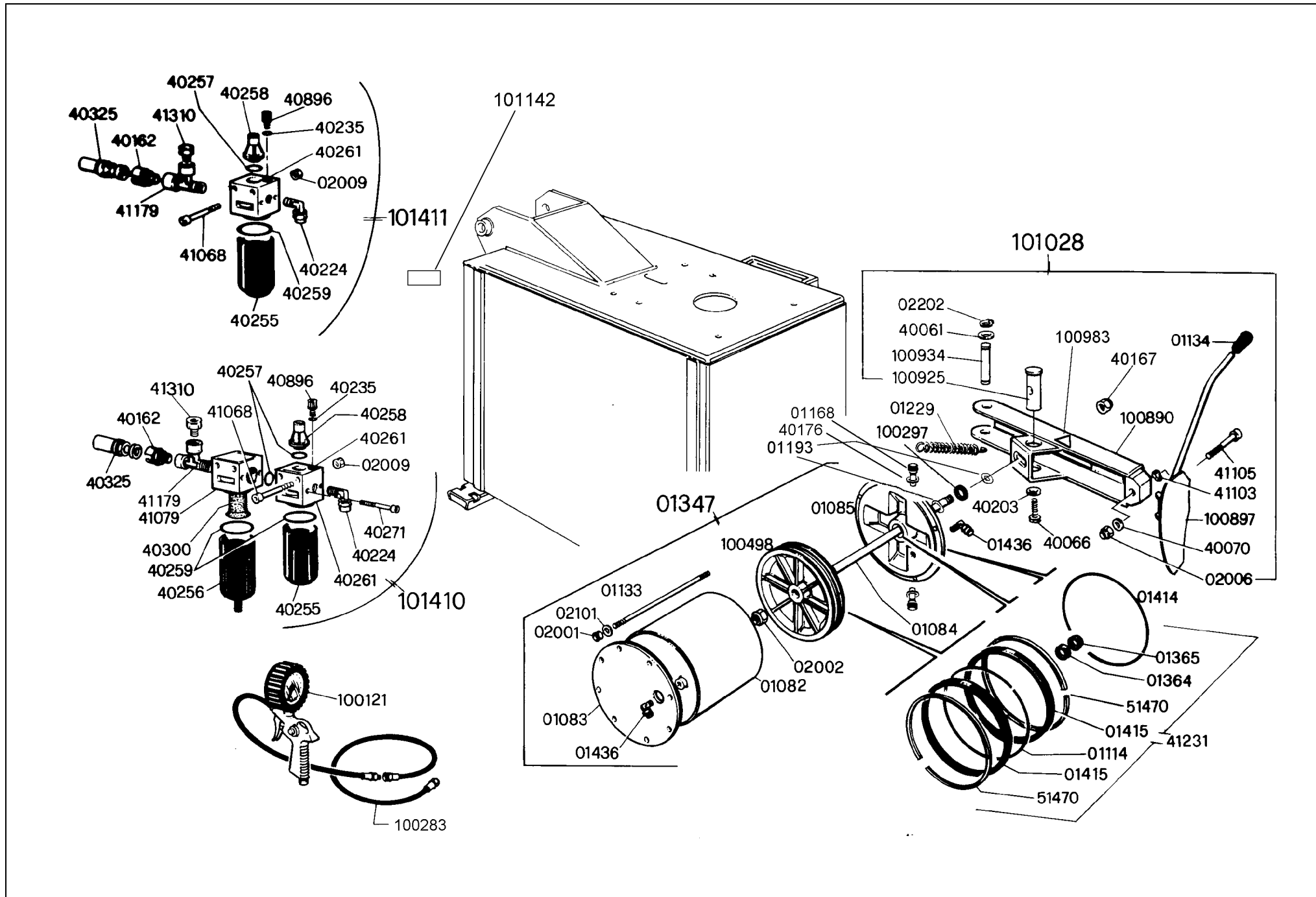


- 20519
- 40203
- 100817
- 02102
- 40175

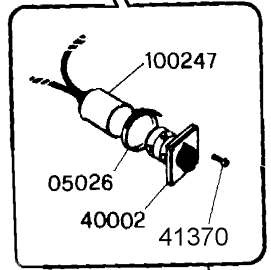
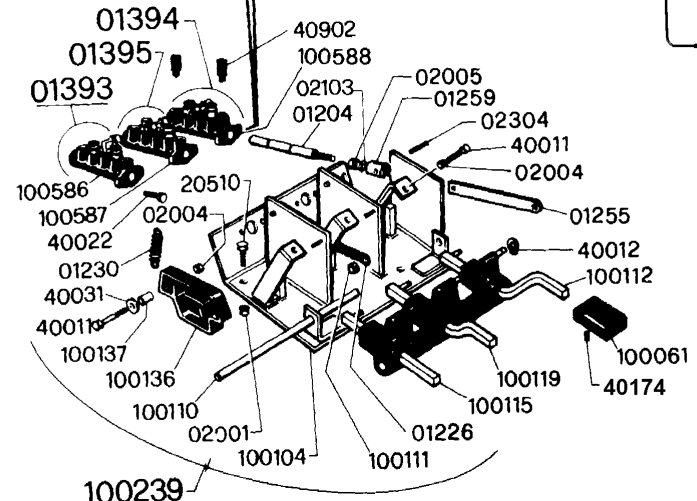
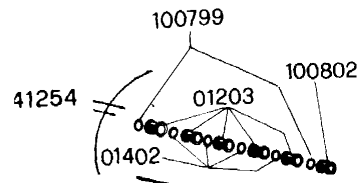
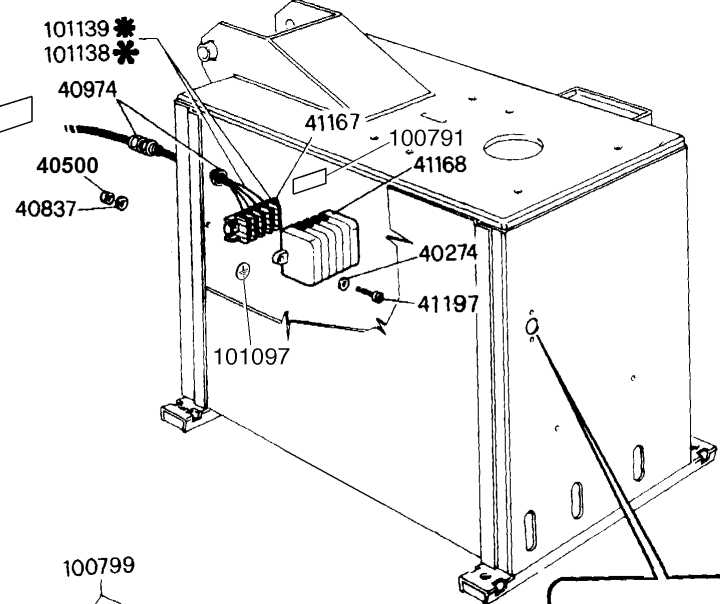
-20"-

100800 FALCO
100804 GRIFONE



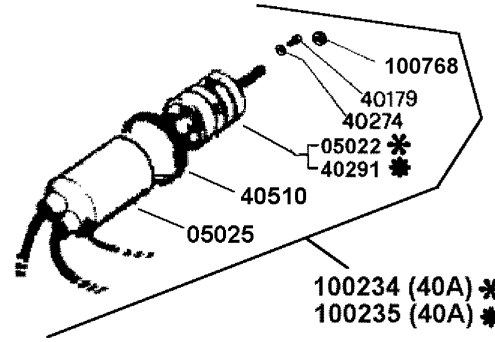
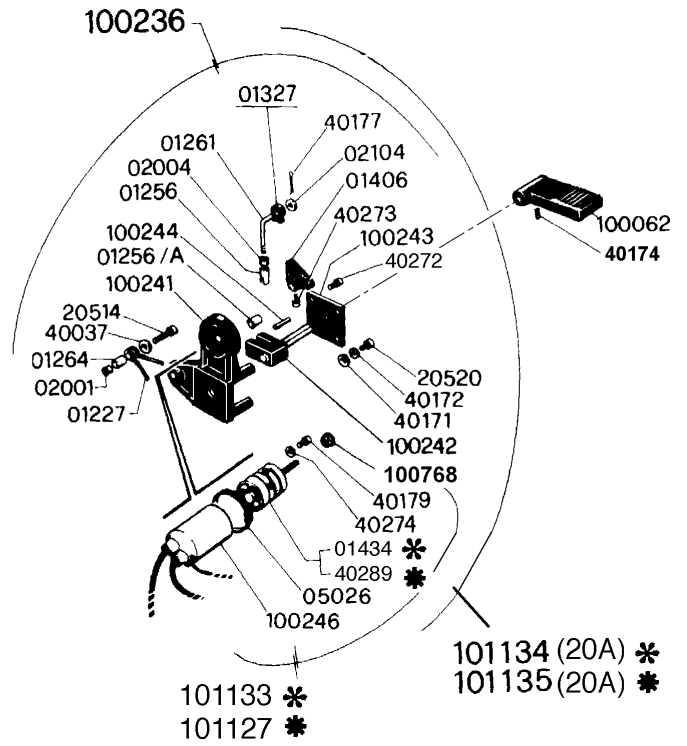


100854 (110V)
 101269 (230V)
 101270 (400V)



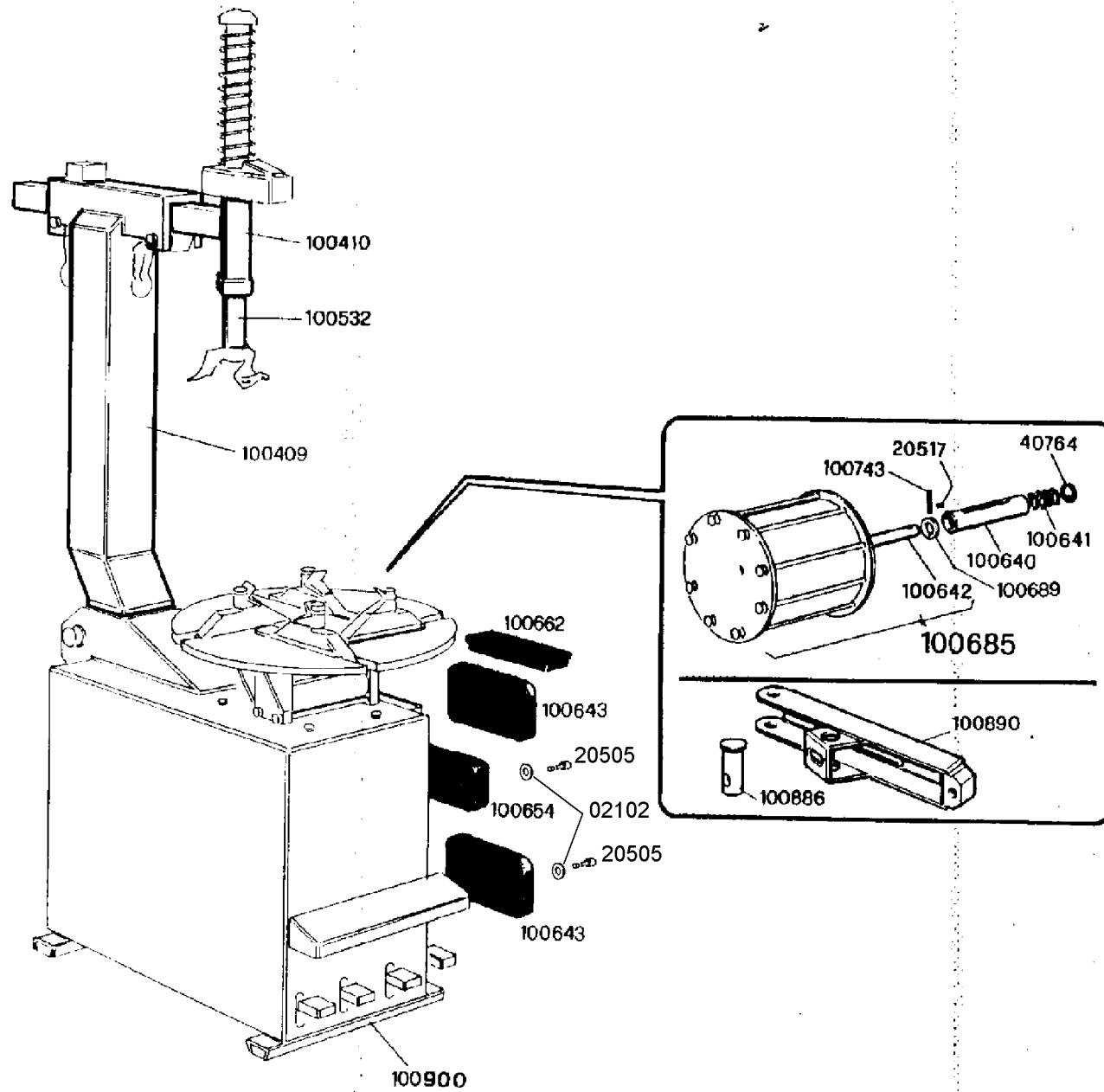
100240

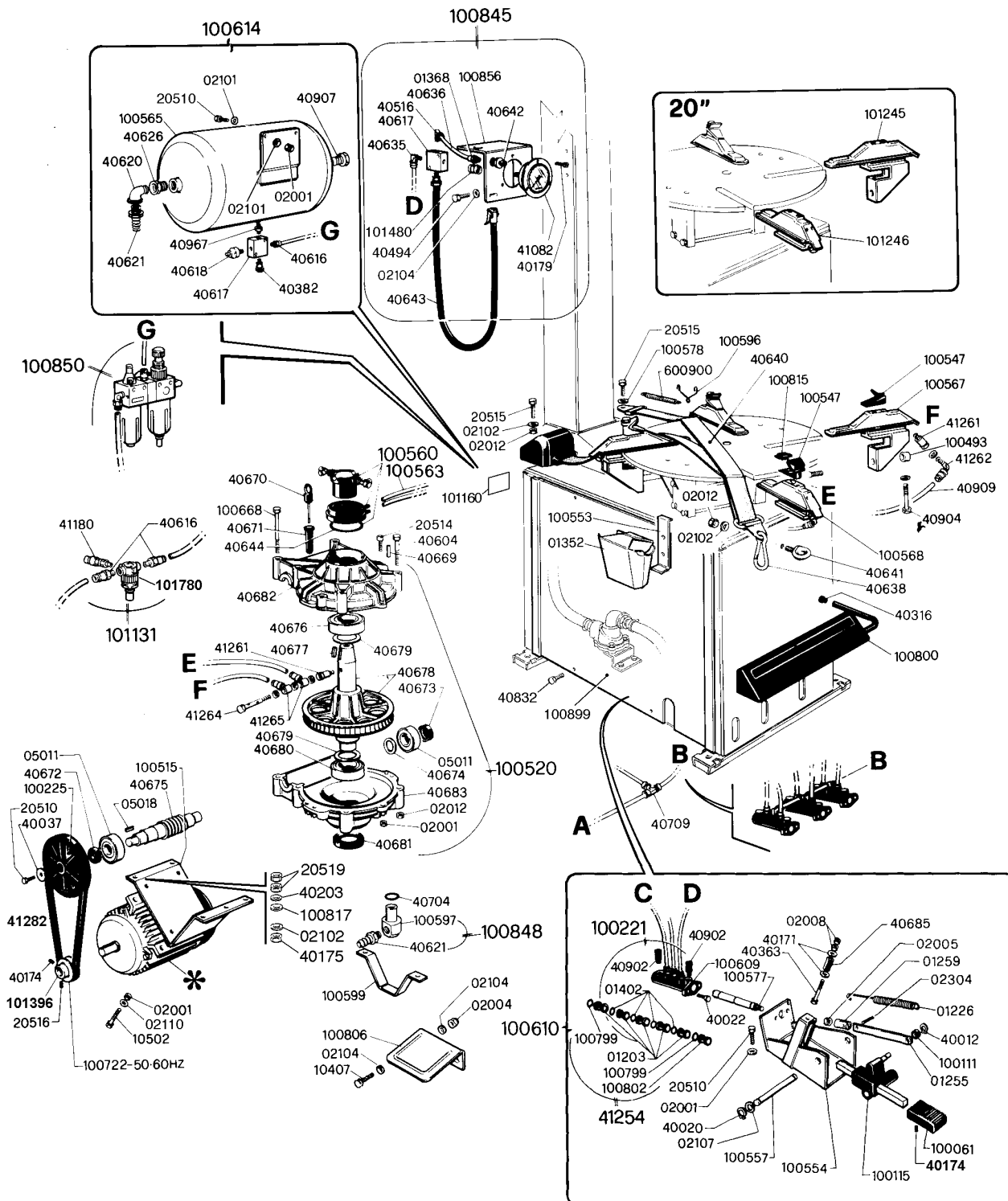
* 1Ph



100234 (40A) *
 100235 (40A) *

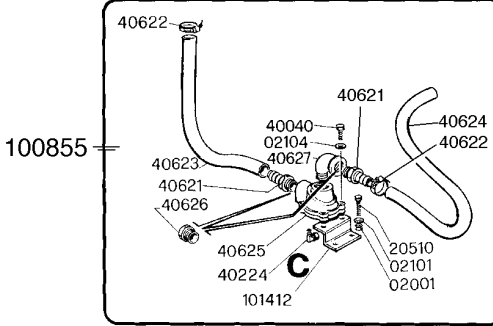
* 3Ph

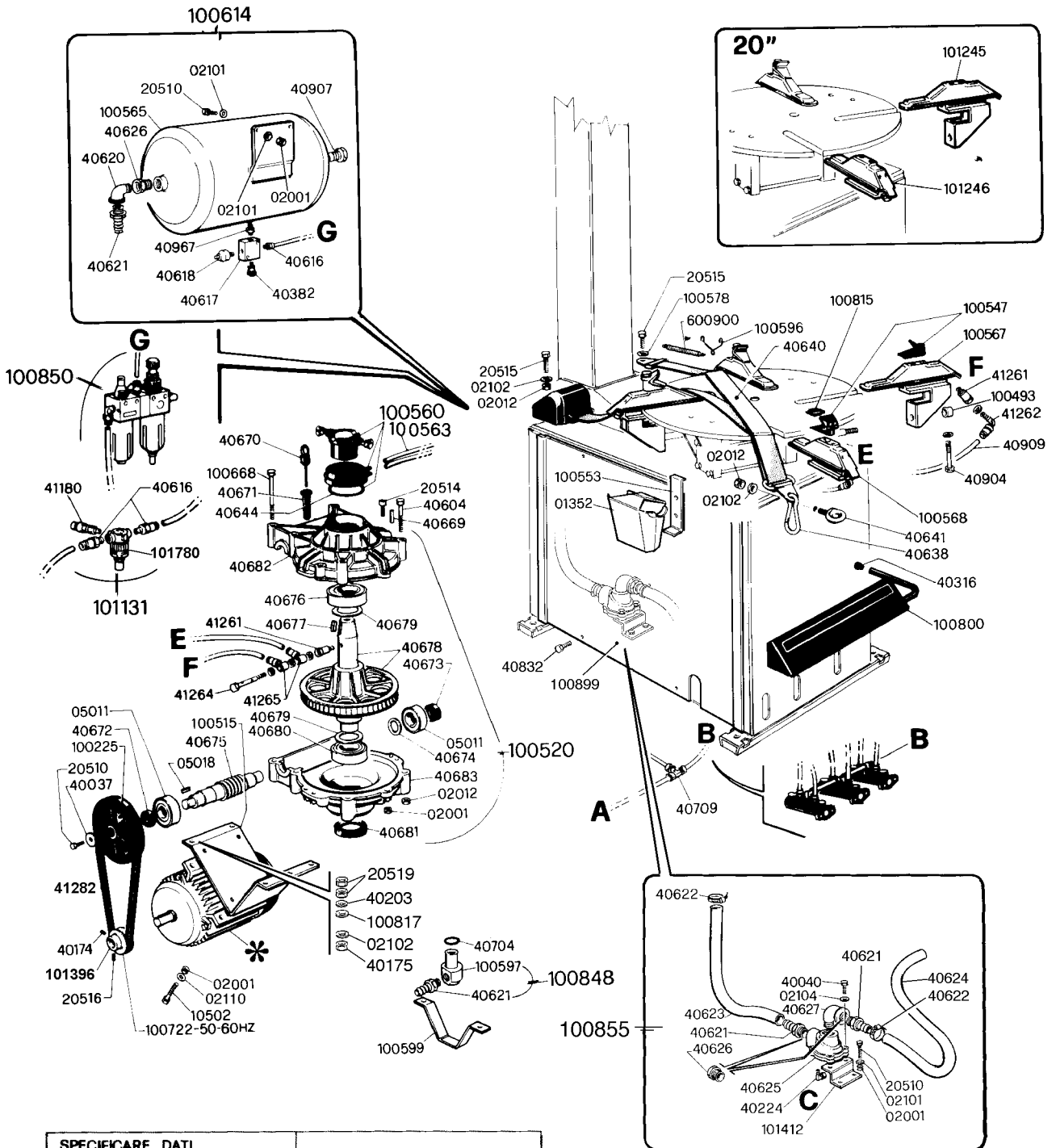




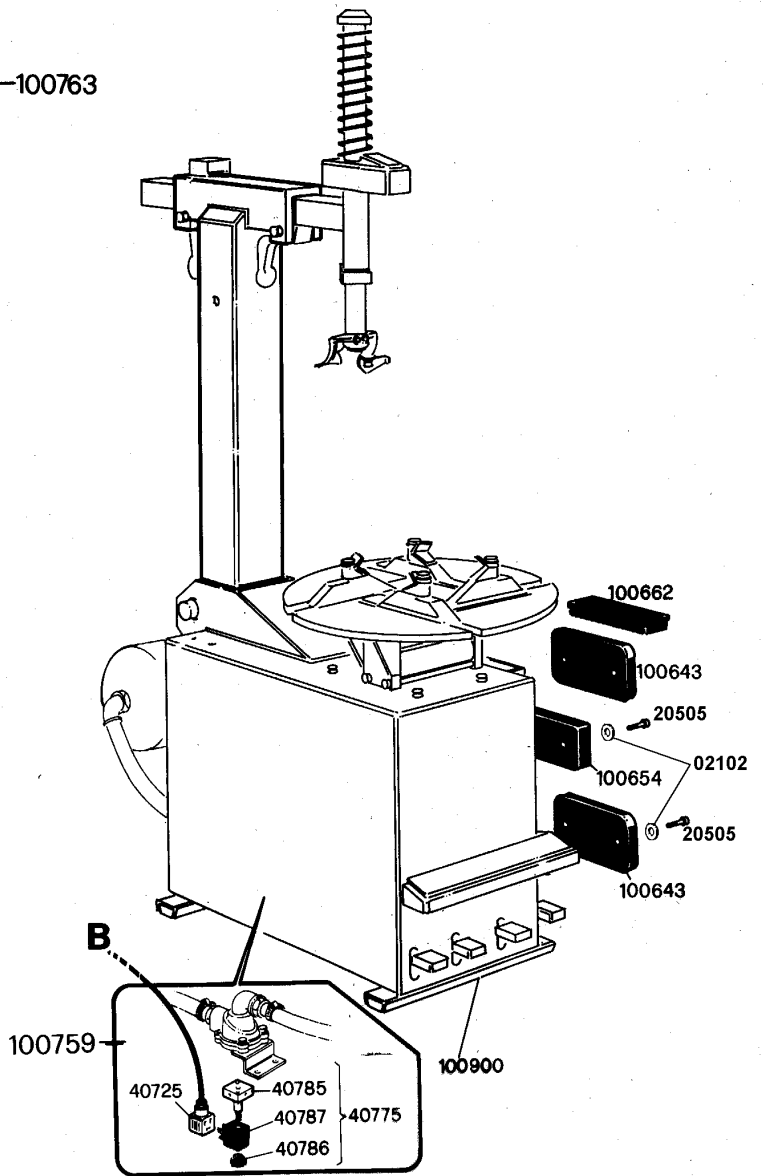
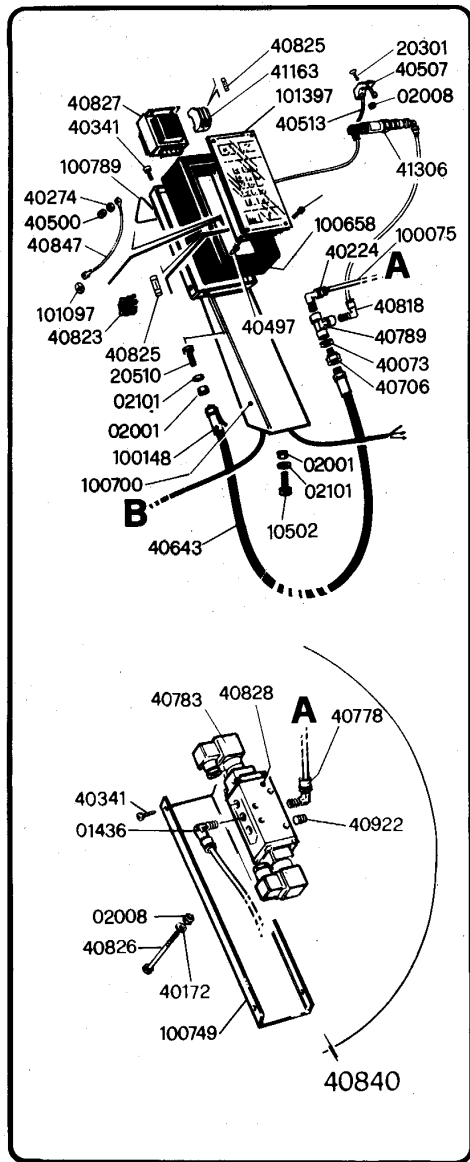
* SPECIFICARE DATI
SPECIFY DETAILS
EIGENSCHAFTEN ERKLÄREN
SPECIFICAR LOS DATOS TECN.
SPECIFIER DONNÉ TECHNIQUES

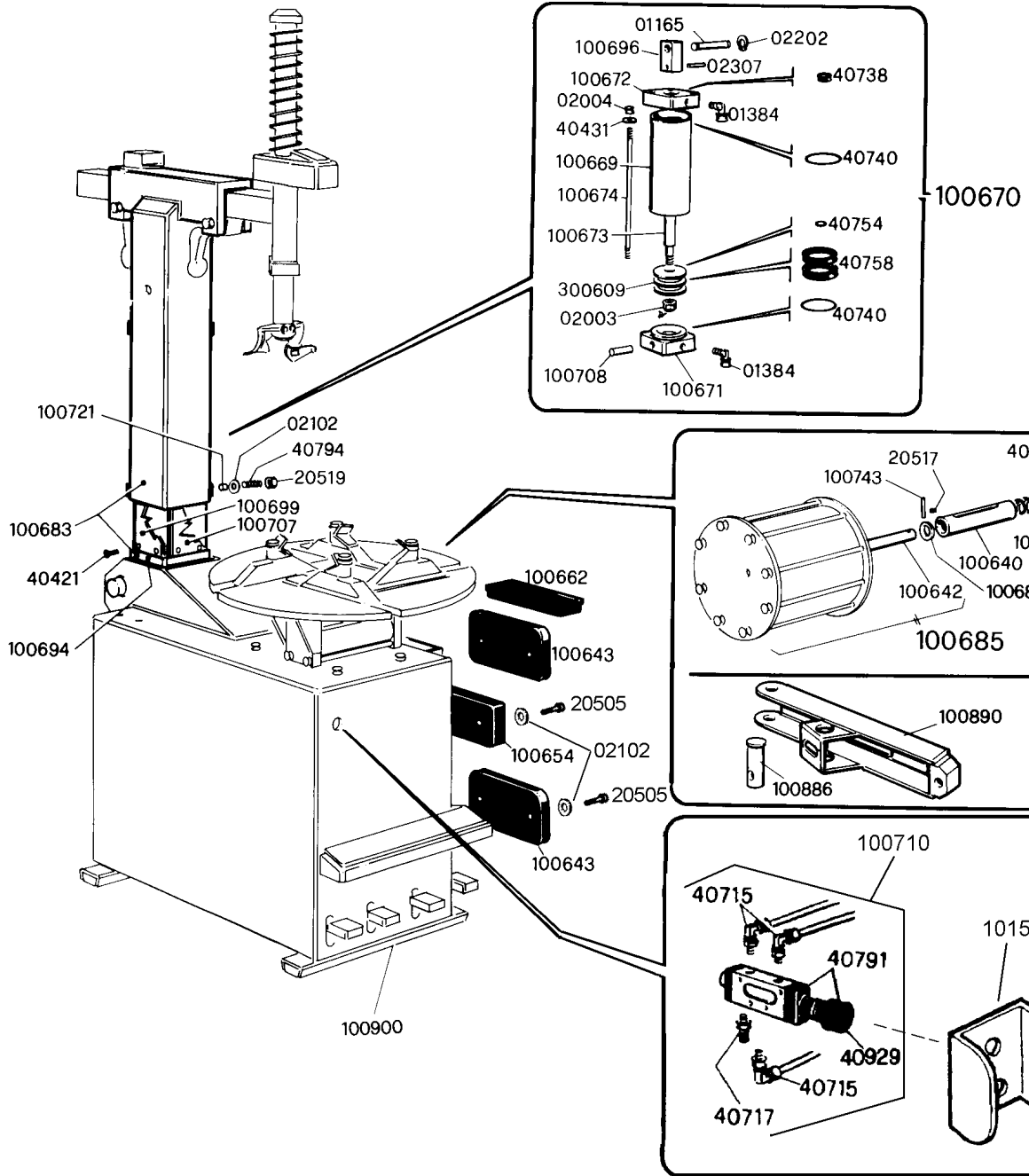
n° cod. 40686					
VOLT	Ph	Hz	RPM	Ph	

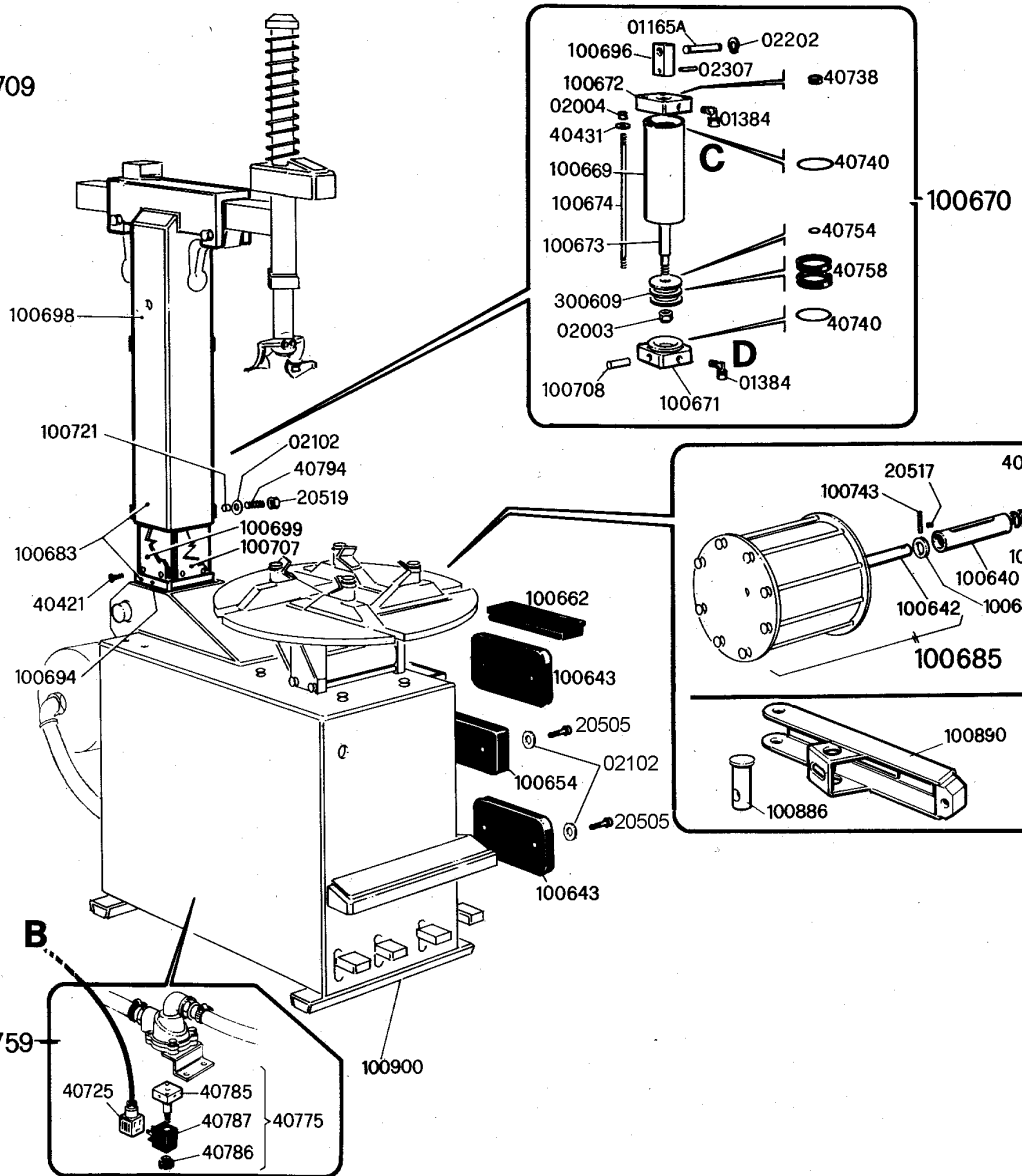
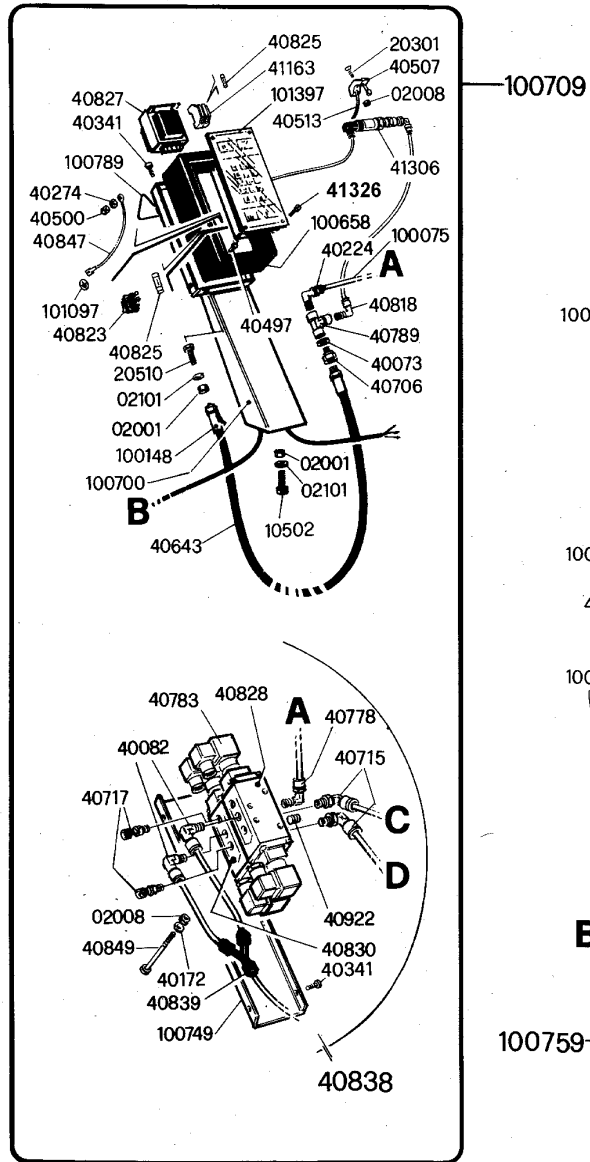


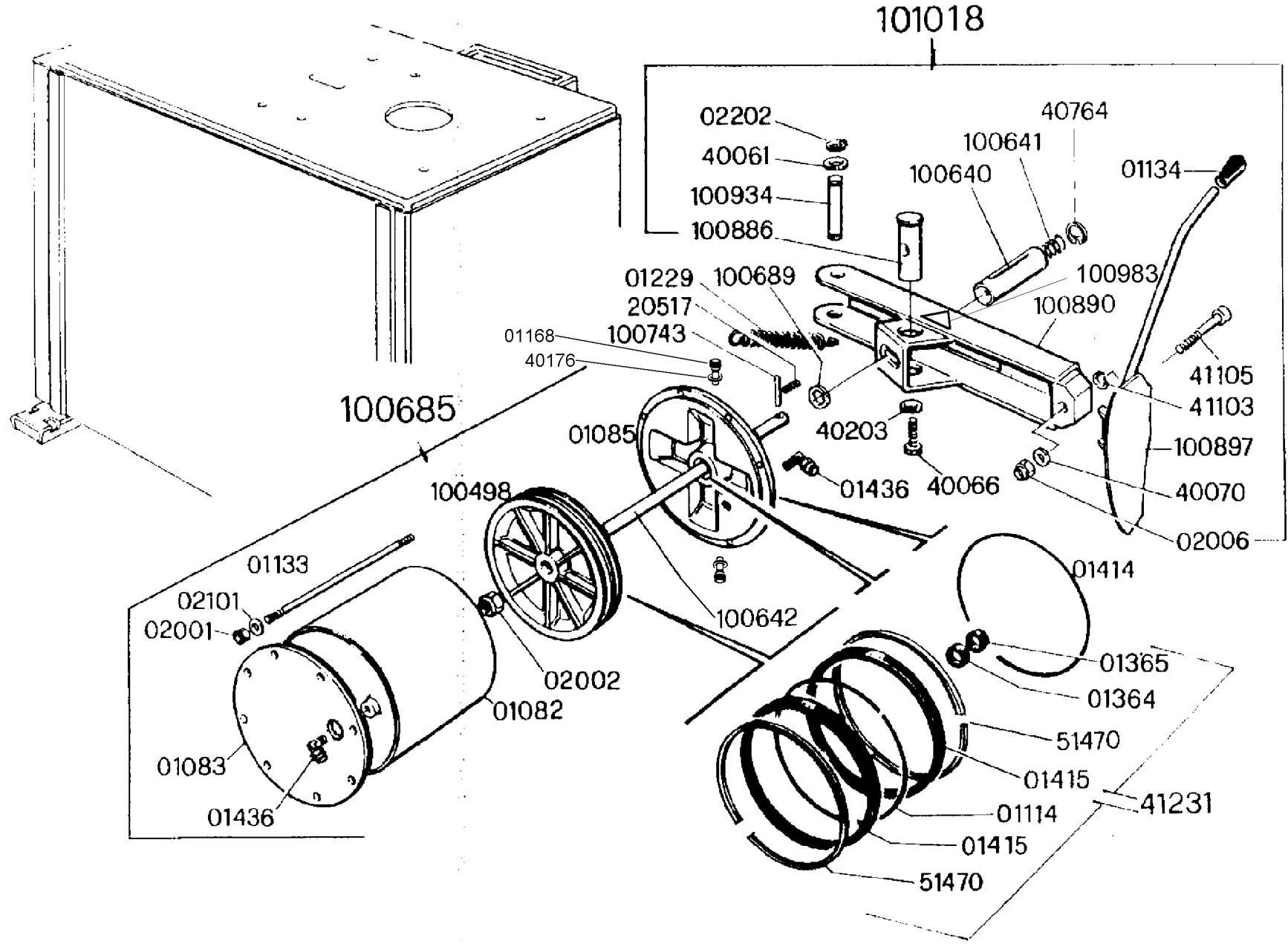


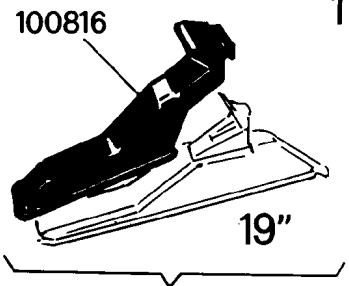
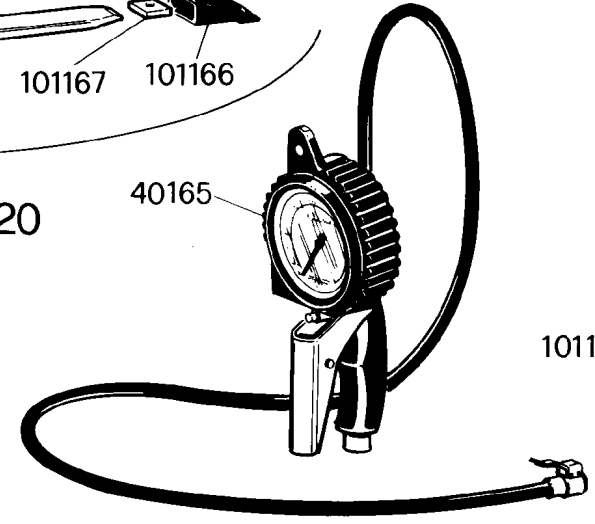
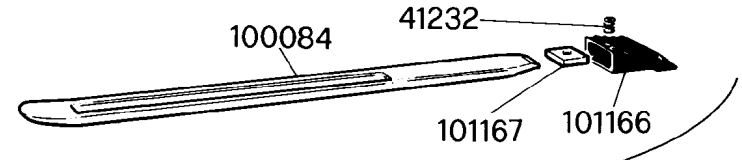
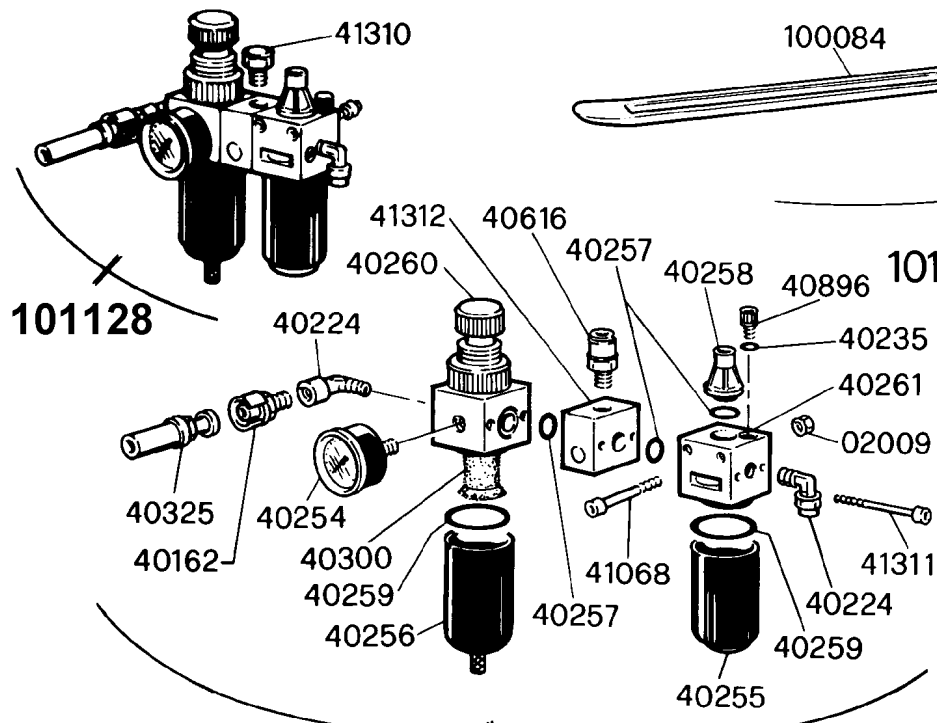
* SPECIFICARE DATI SPECIFY DETAILS EIGENSCHAFTEN ERKLÄREN SPECIFICAR LOS DATOS TECN. SPECIFIER DONNÉ TECHNIQUES	n° cod. 40686				
	VOLT	Ph	Hz	RPM	Ph



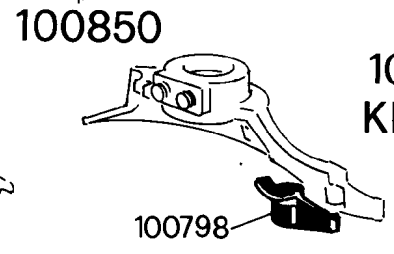




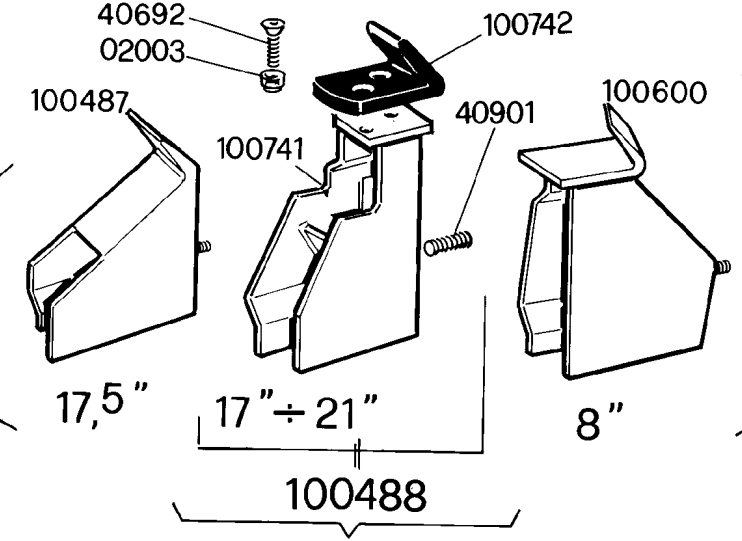




101402 KIT N.4

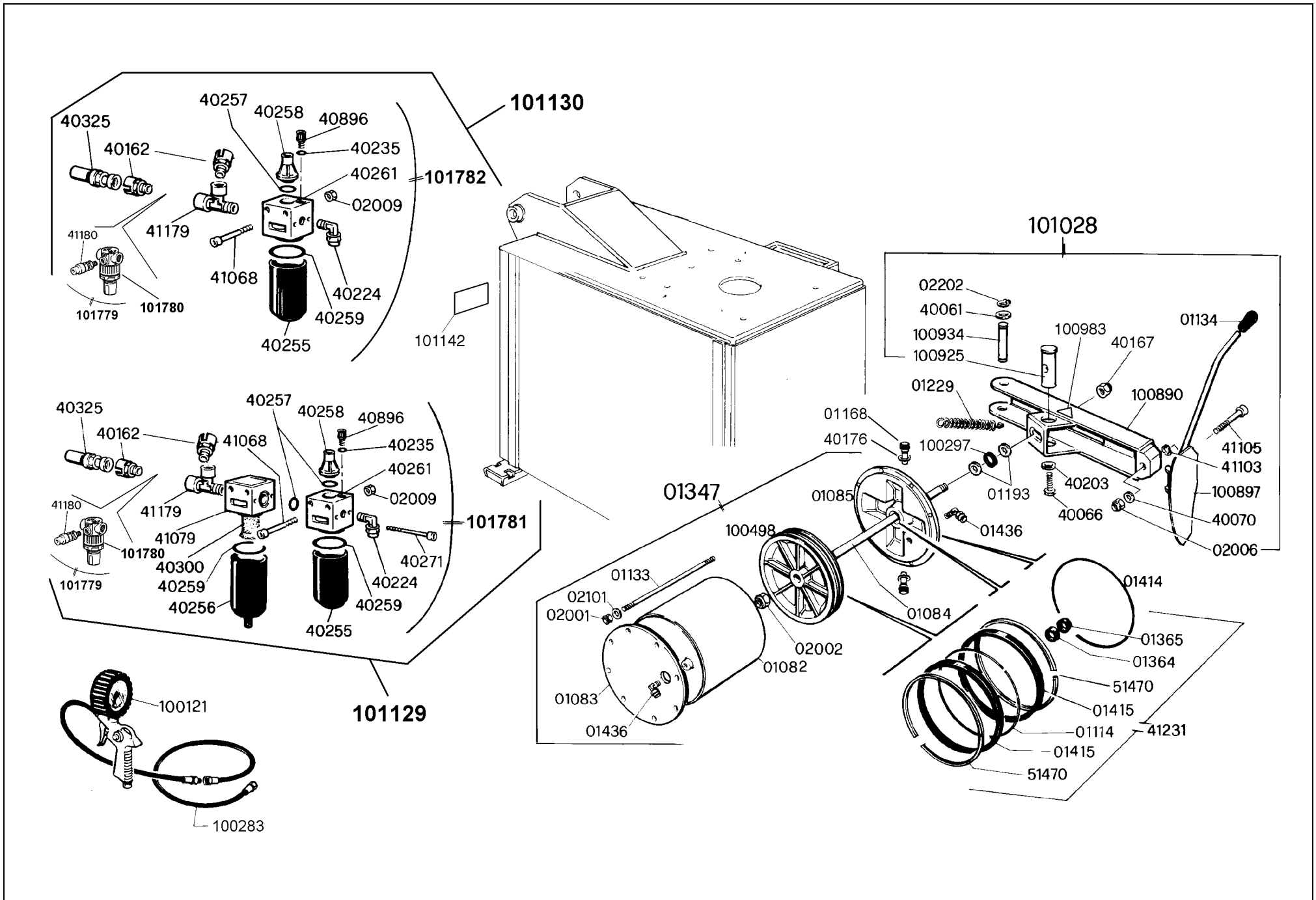


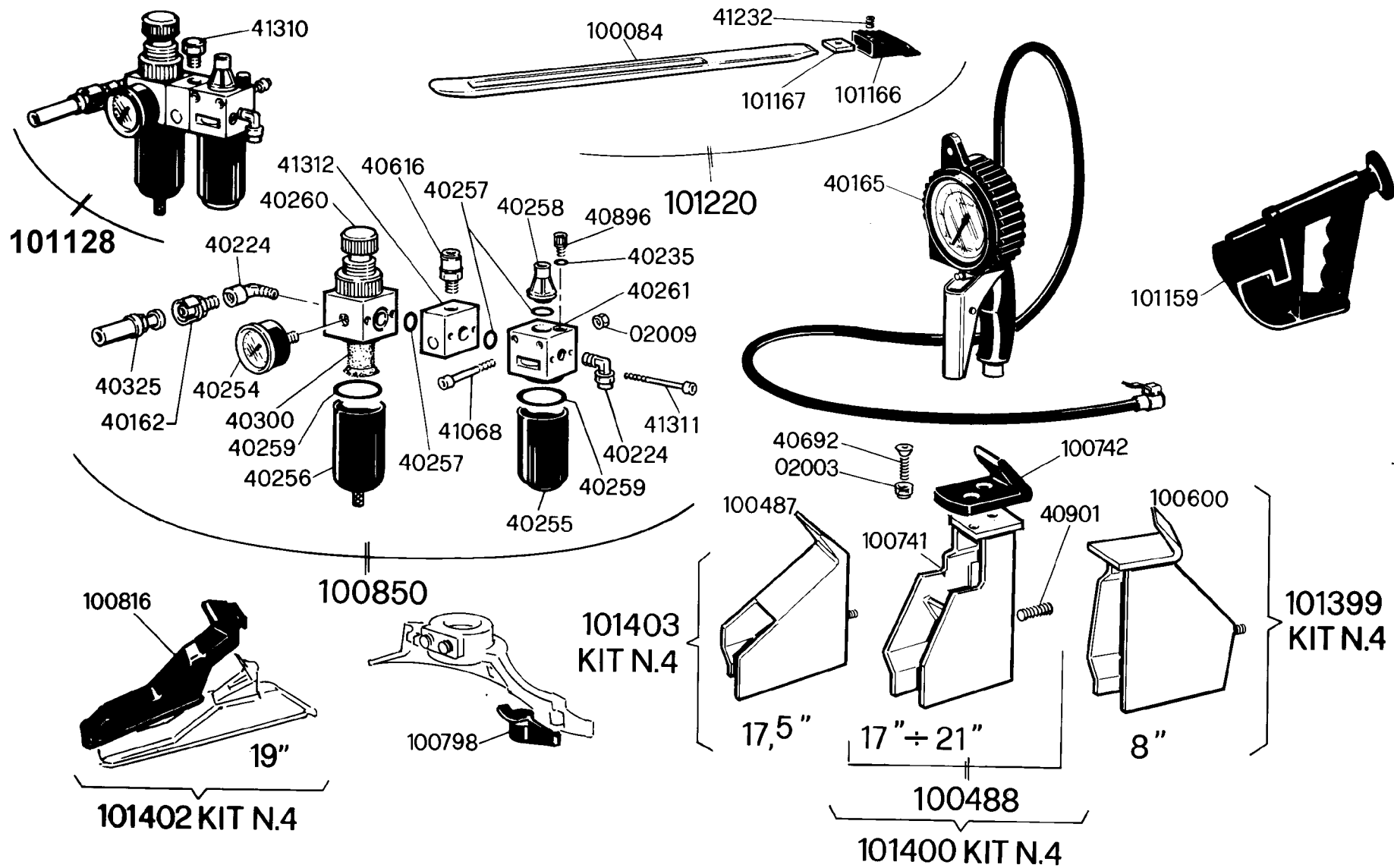
101403 KIT N.4



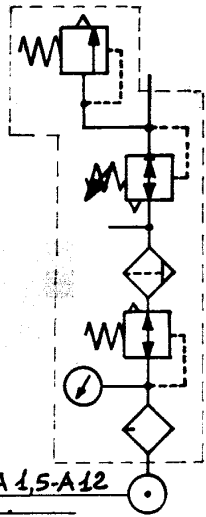
101400 KIT N.4

101399 KIT N.4



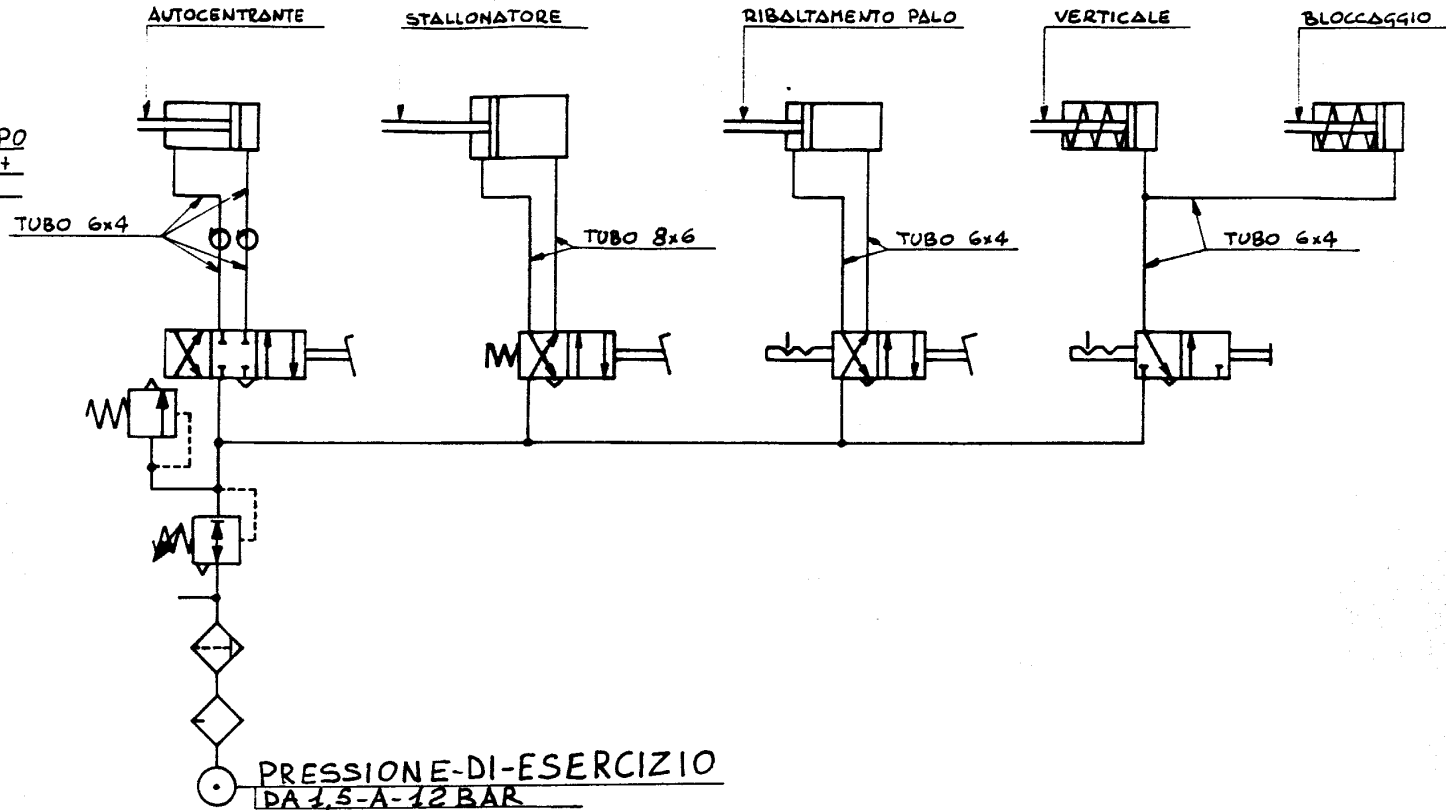


**MONTAGGIO GRUPPO
A-RICHIESTA-FR+L+**
Valv. TAR 3,5-BAR



**P.-DA 1,5-A-12
BAR.**

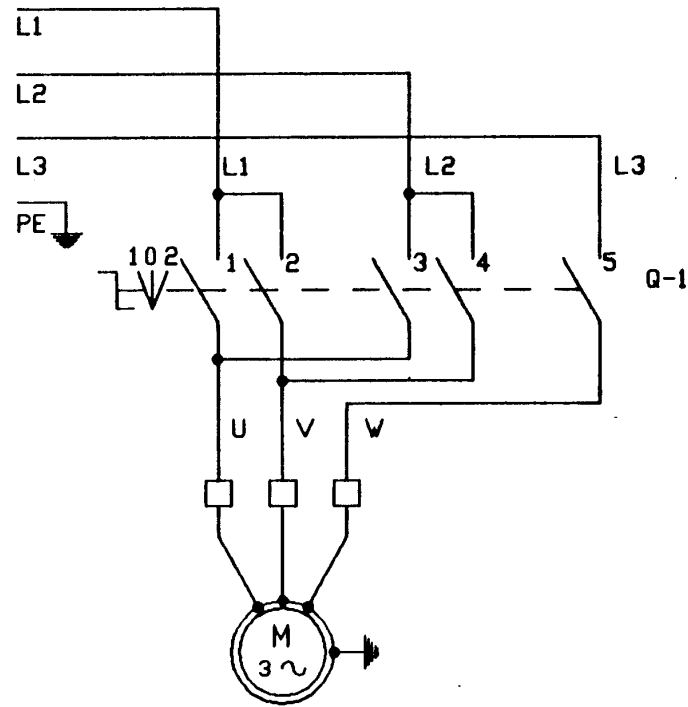
MONTAGGIO GRUPPO A RICHIESTA



Modificato il gruppo a richiesta con valvola di sicurezza
 Data descrizione

MODIFICA

Pos.	Quant.	Materiali	Stato	IT	Prof. cm	Ter.	R. mm
Denominazione				Dim. grezzo		Kg. 100	Fig. over. V
Gruppo				Scala	Data	Dis.	Cont.
SCHEMA IMPIANTO PNEUMATICO				1	1-10-79	ALG/101	4
Macchine				Approntato 8-5-91		Dis. N°	
				Approntato 5-5-89		100080	
A TERMINI DI LEGGE È VIETATA LA RIPRODUZIONE O LA COMUNICAZIONE AD ALTRI SENZA UNA NOSTRA AUTORIZZAZIONE SCRITTA							



MOTORE RIDUTTORE

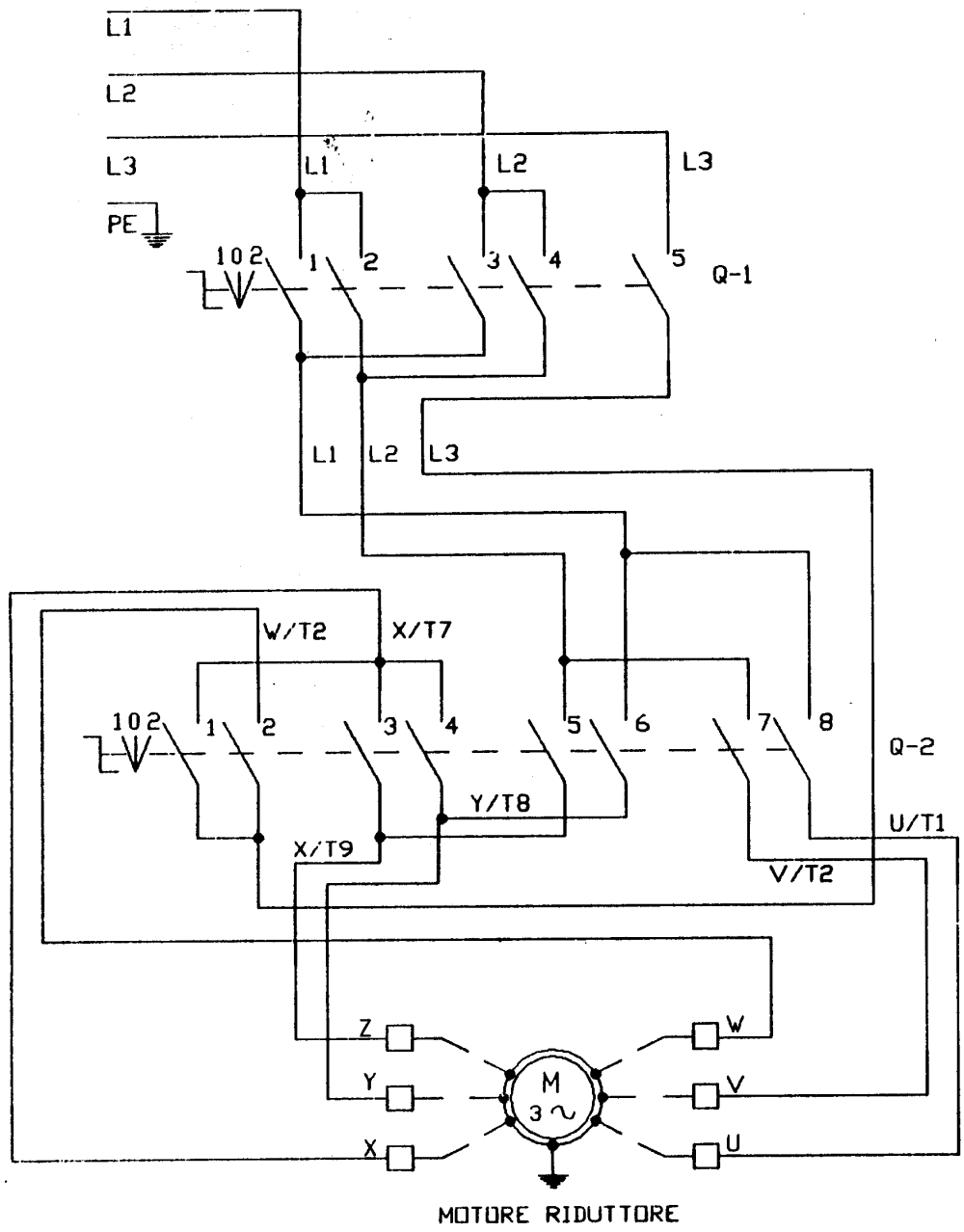
Q-1

	X	X		X		2	POS.	
						0		
X			X	X		1		
1	2	3	4	5	6	CONT.		
I	II	III	ELEM.					

1-ROTAZIONE ORARIA

2-ROTAZIONE ANTIORARIA

DISEGNO : 93680p			DATA	DIS
			23/12/93	PEL
3 Ph - 1 speed			Dis.N°	
			100078	



Q-1

	X	X		X		2	POS.
						0	
X			X	X		1	
1	2	3	4	5	6	CONT.	
I	II	III	ELEM.				

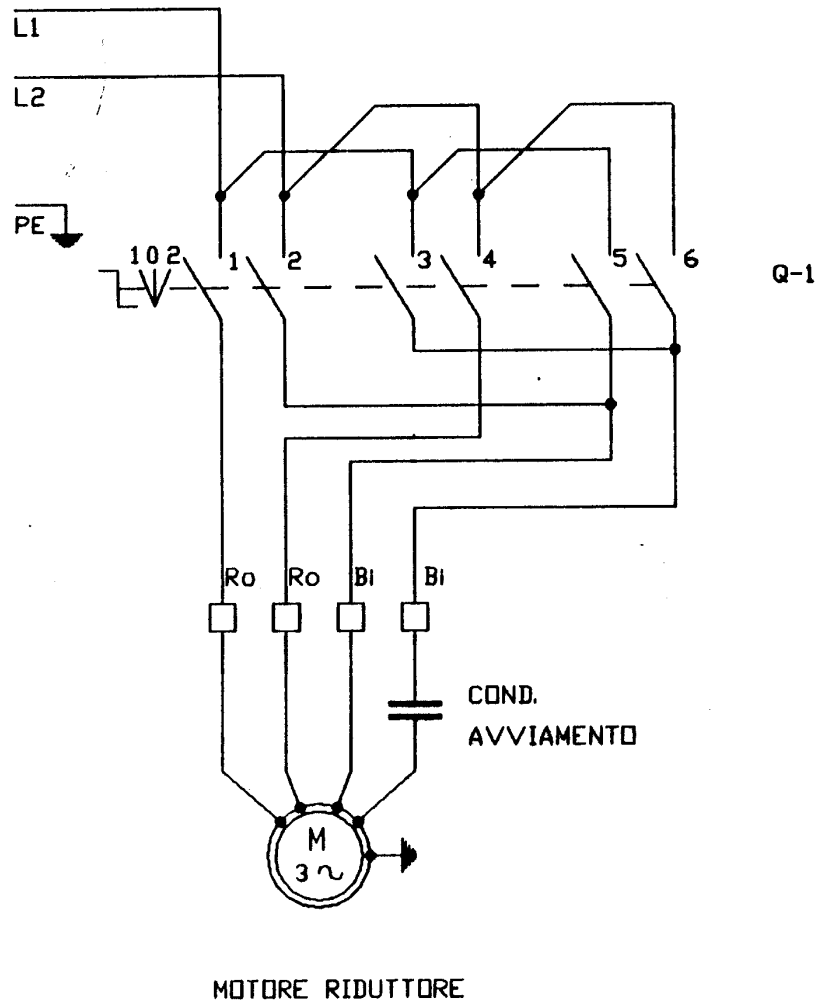
- 1-ROTAZIONE ORARIA
- 2-ROTAZIONE ANTIDRARIA

Q-2

	X	X	X			X	X	2	POS.
								0	
X				X	X			1	
1	2	3	4	5	6	7	8	CONT.	
I	II	III	IV	ELEM.					

- 1-VELOCITA' MINIMA
- 2-VELOCITA' MASSIMA

DISEGNO : 936800			DATA	DIS
			23/12/93	PEL
3 Ph - 2 speed			Dis. N° 100142	



Q-1

X			X	X	X	2	POS.
						0	
X	X	X	X			1	
1	2	3	4	5	6	CONT.	
I	II	III	ELEM.				

1-ROTAZIONE ORARIA
2-ROTAZIONE ANTIORARIA

DISEGNO : 936900			DATA	DIS
			23/12/93	PEL
1 Ph - 1 speed			Dis. N°	
			100183	